

New Hope

Parks and Recreation

Spring/Summer 2024 Programs & Activities



**CHECK OUT
YOUTH SOCCER
PROGRAMS ON
PAGES 9, 18 & 22!**

Table of Contents

- 3 Youth/Teen**
- 18 Sports Camps**
- 21 Inclusion & Adaptive Recreation**
- 22 Parent+Child**
- 24 Parks/Facilities Map**
- 27 Special Events**
- 31 Families**
- 33 Adults**
- 39 Outdoors**
- 41 Golf Course**
- 42 Aquatic Park**
- 46 Facilities**
- 47 Registration**



Contact Information

Parks and Recreation Office

4401 Xylon Ave. N, 763-531-5151

New Hope Aquatic Park

4411 Xylon Ave N, 763-531-5180

New Hope Village Golf Course

8130 Bass Lake Rd, 763-531-5178

New Hope Ice Arena

4949 Louisiana Ave. N, 763-531-5181

Community Gyms

8230 47th Ave. N, 763-531-5155

Weather Cancellation Line

(call after 4 p.m.) 763-531-5158

Susan Rader

Director of Parks and Recreation

Mark Severson

Recreation Facilities Manager

Aaron Thelen

Recreation Supervisor

Steve Ellingson

Athletic Supervisor

Matt Remore

Recreation Facilities Supervisor

Tony Portesan

Recreation Facilities Supervisor

Andrew Kramer

Parks Maintenance Supervisor

Ricky Plemel

Golf Superintendent

Shawn Markham

Forester/Contract Manager

Scott Stephan

Arena Maintenance Operator

Penny Spitzer

Administrative Specialist

Jill Smisek

Office Specialist

Youth/Teen

SPRING BREAK ACTIVITIES

Basketball Camp

Youth in grades 3-8 will build on the fundamental skills of dribbling, shooting, defending, passing and more. Equipment is provided. Cooper High School head coach Bo Powell leads this camp.

350202-A Monday and Tuesday, March 25 and 26
9-11 a.m.

New Hope Community Gyms, 8230 47th Ave N
(north end of Cooper High)
\$50 Residents of New Hope, Crystal, Golden Valley
and Robbinsdale
\$57 Nonresidents

Gymnastics Camp

Youth in grades 1-6 will be introduced to the vault, beam, bars, and floor and will receive one-on-one instruction. Intermediate/Advanced students will work on more advanced skills. There will also be free time to practice new skills. Gymnastics Coordinator Rhonda Bitzer leads the camp.

Tuesday-Thursday, March 26-28

Sandburg Middle School (Gym D)
2400 Sandburg Lane, Golden Valley

350500-A1 Beginner/Adv. Beginner, 9-10:30 a.m.
\$50 Residents of New Hope, Crystal, Golden Valley
and Robbinsdale
\$57 Nonresidents

350500-B1 Interm./Advanced, 10:30 a.m.-12:30 p.m.
\$60 Residents of New Hope, Crystal, Golden Valley
and Robbinsdale
\$67 Nonresidents



LEGO® Brick Harry Potter

LEGO® bricks and Harry Potter® are a magical combination! Whether Muggle or Magical, J.K. Rowling's beloved books inspire these projects, and LEGO bricks will surely capture your young artist's imagination. Youth ages 5-12 will construct with LEGO Bricks, invent spells and create with paint, clay and other art supplies to make magical masterpieces that your LEGO Harry Potter fan will love! *Register by March 17.*

313301-E Monday and Tuesday, March 25 and 26
9 a.m.-12 p.m.

Crystal Community Center, 4800 Douglas Drive
\$81 Residents of New Hope, Crystal, Golden Valley
and Robbinsdale
\$88 Nonresidents

Musical Theater Camps

Participants will learn lines, songs and dances as they put together their own musical! Learn how to properly speak your lines, block a scene, develop your character and much more! We will also play fun, creative games. All that is needed are comfortable clothing and lightweight sneakers or dance shoes. Friends and family are invited to a special performance beginning the final 30 minutes of the last class. *Register by March 18.*

Monday-Thursday, March 25-28

Crystal Community Center, 4800 Douglas Drive
\$101 Residents of New Hope, Crystal, Golden Valley
and Robbinsdale
\$108 Nonresidents

"Aladdin" (Ages 4-7)

313201-A 9 a.m.-12 p.m.

"High School Musical 2" (Ages 7-12)

313201-B 1-4 p.m.





Playground Program

Designed for youth ages 3-12 who will be split into two different age groups: ages 3-6 (must be potty-trained and must be 3 by January 1, 2024), and ages 7-12. The activities, led by fun, outgoing staff, will center around a different theme each week and will include arts and crafts, games, sports, story time, singing and activities. *Please note that inclement weather days will be cancelled. *Registration deadline is one week prior to the session.*

Mornings: 9-11:30 a.m.

\$47 New Hope residents

\$54 Nonresidents

Mondays and Wednesdays, June 24-July 17

(No program July 1-3)

113901-C1 Ages 3-6 Holiday Park

113901-C2 Ages 7-12 Holiday Park

Tuesdays and Thursdays, June 25-July 18

(No program July 2-4)

113901-C5 Ages 3-6 Hidden Valley Park

113901-C6 Ages 7-12 Hidden Valley Park

Mondays and Wednesdays, July 22-August 7

113901-D1 Ages 3-6 Holiday Park

113901-D2 Ages 7-12 Holiday Park

Tuesdays and Thursdays, July 23-August 8

113901-D5 Ages 3-6 Hidden Valley Park

113901-D6 Ages 7-12 Hidden Valley Park

Afternoons: 1-3:30 p.m.

\$47 New Hope residents

\$54 Nonresidents

Mondays, June 24-August 5 *(No program 7/1)*

113902-C1 Ages 3-6 Hidden Valley Park

113902-C2 Ages 7-12 Hidden Valley Park

Tuesdays, June 25-August 6 *(No program 7/2)*

113902-C3 Ages 3-6 Hidden Valley Park

113902-C4 Ages 7-12 Hidden Valley Park

Park Locations

Hidden Valley Park, 8800 32nd Ave N

Holiday Park, 9024 47th Ave N

Playground Adventure Van

The New Hope and Golden Valley recreation departments are bringing summer playground FUN to you! Our entertaining staff will lead games, crafts, and activities to fit themed weeks throughout the summer for youth ages 7-12. This drop-in program allows children to come and go at their discretion. Parents/Guardians are encouraged to set boundaries and communicate limits with their children before they attend the program.

Mondays and Wednesdays, June 17-July 30

(no program 7/1, 7/3)

9:30-11:30 a.m.

Free!

Mondays: Terra Linda Park, 2701 Lamphere Dr

Wednesdays: Glenview Terrace Park, 2351 Zenith Ave N

Beginning Sports-of-Sorts

This program allows young athletes to learn some basic sports skills. Boys and girls ages 4-6 will participate in various activities, including t-ball, soccer, basketball and football. The fee includes a T-shirt. *Registration deadline is one week prior to the session.*

111401-A Mondays, June 3-24

111401-B Mondays, July 8-29

5:30-6:15 p.m.

Liberty Park, 9015 60th Ave N

\$44 New Hope residents

\$51 Nonresidents

Amazing Athletes

This class is perfect to get children ages 3-5 moving while learning new sports and skills. Amazing Athletes allows every child to learn the fundamentals of many different sports along with hand-eye coordination, gross motor skills and cognitive development. *Registration deadline is one week prior to the class.*



Mondays, April 8-29

110101-A1 5:45-6:30 p.m.

110101-A2 6:45-7:30 p.m.

Davis Community Center (Meadowbrook School)

5430 Glenwood Ave N, Golden Valley

Thursdays, August 1-22

110101-B1 5:30-6:15 p.m.

110101-B2 6:30-7:15 p.m.

Crystal Community Center, 4800 Douglas Drive

\$53 Residents of New Hope, Crystal, Golden Valley and Robbinsdale

\$60 Nonresidents



Baseball Programs

The leagues consist of practices and games. Participants will receive their team information following the coaches' meeting in June. Based on the number of teams, some practices may be held at Holiday or Little Acre parks. The program fee includes a hat and a T-shirt. Players should bring a glove and water bottle to each game and practice.

Save the date! Picture night is Monday, June 24 at New Hope City Hall, 4401 Xylon Ave N.

Register early - the fee increases after May 24!

Coaches Needed!

Each team needs two coaches. A coaches orientation will be scheduled for early June and will include program information and helpful coaching tips provided by the Minnesota Twins. Coaches' children receive a free registration (One child per team coached. No friend requests will be taken after the coaches meeting. Payment is due at the time of registration and will be refunded after the season is complete). If interested, contact Aaron Thelen at athelen@newhopemn.gov or 763-531-5153.

T-Ball One

Learn the rules of baseball in this fun league for ages 4-5. Hit off of a tee and develop skills such as throwing, catching, base running and fielding. Practice your skills, then try them out during games. *The rain make-up date is August 5.*

110302-A Mondays and Wednesdays
June 17-July 31 (no program 6/19, 7/1, 7/3)
5:45-6:30 p.m.

Meadow Lake Elementary, 8525 62nd Ave N
\$60 If registered by May 24; \$70 after May 24
(Nonresidents of New Hope add \$7 to the fee)

T-Ball Two

Learn the rules of baseball in this fun league for ages 5-6. Hit off of a tee and develop skills such as throwing, catching, base running and fielding. Practice your skills, then try them out during games. *Rain make-up date is August 6.*

110303-A Tuesdays and Thursdays
June 18-Aug. 1 (no program 7/2, 7/4)
5:45-6:30 p.m.

Meadow Lake Elementary, 8525 62nd Ave N
\$60 If registered by May 24; \$70 after May 24
(Nonresidents of New Hope add \$7 to the fee)

Pitch by Coach One

Let's play ball! Youth ages 6-8 will have fun and learn more about baseball as coaches pitch in this league. Whether you've played before or it's your first time, you will learn and enhance ball skills, including batting, fielding, and positioning. Aluminum bats and soft-tee balls are used. *The rain make-up date is August 5.*

110304-A Mondays and Wednesdays
June 17-July 31 (no program 6/19, 7/1, 7/3)
6:45-7:45 p.m.

Meadow Lake Elementary, 8525 62nd Ave N
\$60 If registered by May 24; \$70 after May 24
(Nonresidents of New Hope add \$7 to the fee)

Pitch by Coach Two

Youth ages 8-10 will have fun as they learn more about baseball and take the next step as coaches pitch in this league. If you've played before or it's your first time, you will learn ball skills, including batting, fielding and positioning. Aluminum bats and soft-tee balls are used. *Rain make-up date is August 8.*

110304-B Tuesdays and Thursdays
June 18-Aug. 1 (no program 7/2, 7/4)
6:45-7:45 p.m.

Meadow Lake Elementary, 8525 62nd Ave N
\$60 If registered by May 24; \$70 after May 24
(Nonresidents of New Hope add \$7 to the fee)



RevSports T-Ball

Participants in these parent-involved programs will start each class with a game of catch, then transition to base running, batting and an inning of play. Tennis balls and plastic bats will be used in these programs. Athletic footwear required. Cleats and gloves are optional. Programs are run by RevSports staff.

Mondays, April 8-29

130305-A Ages 2-3 with parent 5-5:25 p.m.
130305-B Ages 3-5 with parent 5:30-6:10 p.m.

Mondays, May 6-June 3 (no class 5/27)

130305-A1 Ages 2-3 with parent 5-5:25 p.m.
130305-B1 Ages 3-5 with parent 5:30-6:10 p.m.

Mondays, August 12-September 9 (no class 9/2)

130305-A2 Ages 2-3 with parent 5-5:25 p.m.
130305-B2 Ages 3-5 with parent 5:30-6:10 p.m.
Welcome Park, 4630 Welcome Ave N, Crystal
\$67 Residents of New Hope, Crystal and
Robbinsdale
\$74 Nonresidents

RevSports Coach Pitch Baseball/Softball

This fundamental skills program will include throwing, catching, fielding grounders, batting and base running. Players will begin each day with a warm-up and end each session with an inning of play. Programs are run by RevSports staff.

Mondays, April 8-29

110306-A Ages 4-6 6:15-6:55 p.m.
110306-B Ages 5-8 7-7:40 p.m.

Mondays, May 6-June 3 (no class 5/27)

110306-A1 Ages 4-6 6:15-6:55 p.m.
110306-B1 Ages 5-8 7-7:40 p.m.

Mondays, August 12-September 9 (no class 9/2)

110306-A2 Ages 4-6 6:15-6:55 p.m.
110306-B2 Ages 5-8 7-7:40 p.m.
Welcome Park, 4630 Welcome Ave N, Crystal
\$67 Residents of New Hope, Crystal and
Robbinsdale
\$74 Nonresidents



Golf League

Grab some friends and enjoy your summer playing golf in our junior league! Youth of all skill levels between the ages of 8 and 17 can participate in this 10-week league. This league focuses on recreation, learning and fun! The league features weekly instruction with events and prizes. There will be a pizza party on the last league day. Instruction will be held at 11 a.m. each week, followed by golf. Tee times will be assigned to each group. And New Hope offers the best deal around- unlimited golf all season for \$175!

Tuesdays, June 11-August 13

11 a.m.-1:30 p.m.
New Hope Golf Course, 8130 Bass Lake Road
111800-A \$120 for entry fee and 10 league days
111800-B \$175 for entry fee and unlimited golf

Golf Lessons

These programs emphasize the “fundamentals and fun” in golf. Participants ages 5-15 will learn rules, etiquette, and scoring and will gain a better understanding of the golf swing and how the game is played. These lessons will provide a solid foundation for the future, both on and off the course. Clubs are available or you may bring your own.

Saturdays, June 8-22

111801-A 10-11 a.m.
111801-B 11 a.m.-12 p.m.
New Hope Golf Course, 8130 Bass Lake Road
\$65 per person

A Beginner's Guide to Golf

Kids and adults can attend a free seminar to better understand golf. We'll cover rules and terminology, equipment, proper grip and stance and hitting the ball. No equipment is needed and no registration is required.

Sunday, May 19

12-12:30 p.m.
12:30-1 p.m.
1-1:30 p.m.
Free!



REGISTER ONLINE



RevSports Tennis Lessons

Participants ages 5-9 will develop their hand-eye coordination as they learn the basic skills of tennis, including returning serves, preparing for shots and covering the court. Equipment is provided, or you may bring your racquet. Lessons are run by RevSports staff.

Tuesdays, April 9-30

111505-A MiniStars, Ages 5-7 5:45-6:25 p.m.
111506-A MightyStars, Ages 6-9 6:30-7:10 p.m.

Tuesdays, May 7-28

111505-B MiniStars, Ages 5-7 5:45-6:25 p.m.
111506-B MightyStars, Ages 6-9 6:30-7:10 p.m.

Tuesdays, June 11-July 9 (no class 7/2)

111505-C MiniStars, Ages 5-7 5:45-6:25 p.m.
111506-C MightyStars, Ages 6-9 6:30-7:10 p.m.

Tuesdays, July 16-August 6

111505-D MiniStars, Ages 5-7 5:45-6:25 p.m.
111506-D MightyStars, Ages 6-9 6:30-7:10 p.m.

Civic Center Park, 4401 Xylon Ave N
\$67 Residents of New Hope, Crystal and Robbinsdale
\$74 Nonresidents

RevSports Pickleball Lessons

Pickleball is a sport played on a court similar to a tennis court utilizing a wiffle ball and paddle. Participants ages 6-16 will learn the skills and rules of this popular sport. All equipment is provided. Lessons are run by RevSports staff.

Wednesdays, April 10-May 1

111507-A Ages 6-12 6-6:40 p.m.
111508-A Ages 12-16 6:45-7:25 p.m.

Wednesdays, May 8-29

111507-B Ages 6-12 6-6:40 p.m.
111508-B Ages 12-16 6:45-7:25 p.m.

Wednesdays, June 5-July 10 (no class 6/19, 7/3)

111507-C Ages 6-12 6-6:40 p.m.
111508-C Ages 12-16 6:45-7:25 p.m.

Wednesdays, July 17-August 7

111507-D Ages 6-12 6-6:40 p.m.
111508-D Ages 12-16 6:45-7:25 p.m.

Meadow Lake Elementary courts, 8525 62nd Ave N
\$67 Residents of New Hope, Brooklyn Center,
Crystal and Robbinsdale
\$74 Nonresidents

New Hope Skating School

New Hope Skating School classes are based on the Ice Sports Industry's (ISI) Recreational Ice Skating Program for ice skaters ages 3 and older. Pre-Alpha, Alpha, Beta, Gamma and Delta are all skill levels of the testing program. Private lessons are also available. Please see the class descriptions for further details. Classes are taught by Dawn Landon Boice and her exemplary staff. Participants will need skates with guards. Rental skates are available. Tots are encouraged to wear helmets. Classes are held on the south rink (meet at the bottom of the stairs). For additional information, call the New Hope Parks and Recreation Department at 763-531-5151 or the ice arena at 763-531-5181.

New Hope Ice Arena, 4949 Louisiana Ave N

Mondays, June 17-August 19

161201-A Tots ages 3-5, 6:30-7 p.m.
161202-A Pre-Alpha ages 6-12, 7-7:30 p.m.
161203-A Alpha 7-7:30 p.m.
161204-A Beta 7-7:30 p.m.
161205-A Gamma 7-7:30 p.m.
161206-A Delta 7-7:30 p.m.
161207-A Adult & Teen 7:30-8 p.m.

\$120 New Hope residents
\$127 Nonresidents

161209-A Skate Rental (10 classes)
\$20 per participant

Private Lessons

Includes a 15-minute private lesson with an instructor, followed by practice time. Levels Free Style 1 and up require an ISI Membership.

161208-A Mondays, June 17-August 19
7:30-9 p.m.

\$308 New Hope residents
\$315 Nonresidents



Skating Level Definitions:

Tots: Tots will be split into smaller groups based on ability: 1. Little to no experience on ice, 2. Able to stand up by themselves, or 3. Able to march/push without assistance.

Alpha: Passed Pre-Alpha or equivalent. Students learn forward stroking, forward crossovers on the right and left and a one-foot snowplow stop.

Beta: Passed Alpha or equivalent. Students learn backward stroking, backward crossovers and T-stops on right and left.

Gamma: Passed Beta or equivalent. Students learn forward outside 3-turn on right and left, Mohawk combination on right and left and hockey stop.

Delta: Passed Gamma or equivalent. Students learn forward inside 3-turn on the right and left, forward edges inside and outside, bunny hop and a choice of Shoot the Duck or Lunge to a one-foot glide.

Adult & Teen: Ages 13 to Adult. Students can learn to skate, brush up on their skills or work on more advanced skills. Open to all ability levels.



Fencing

Youth in grades 2-8, join this fast growing Olympic sport. Using a step-by-step approach, participants will learn and practice a fencing move, then mock-fence using only the moves taught so far. Students will spend 10-15 minutes of each class fencing with multiple fencers at their skill level. Session includes an in-class tournament. Equipment provided. *Register by March 28.*

110601-A Thursdays, April 4-May 9
7:40-8:40 p.m.

Forest Elementary, 6800 47th Ave N, Crystal
\$85 Residents of New Hope, Crystal, Golden Valley
and Robbinsdale
\$92 Nonresidents

Little Tigers Martial Arts

Youth ages 3-5, Master Tom Malone will teach you basic martial arts skills including kicks, punches and strikes. Develop coordination and flexibility through a variety of exercises. This program promotes focus, discipline and respect, which are great personal tools to carry into the future. *Deadline to register is one week prior to the class.*

111001-A Tuesdays, April 2-May 7
111001-A1 Tuesdays, June 11-July 23 (no class 7/2)
10-10:30 a.m.

New Hope Ice Arena, 4949 Louisiana Ave N

111001-B Tuesdays, June 18-July 30 (no class 7/2)
5:45-6:15 p.m.

Davis Community Center (Meadowbrook School)
5430 Glenwood Ave N, Golden Valley
\$74 Residents of New Hope, Crystal, Golden Valley,
Robbinsdale and St. Louis Park
\$81 Nonresidents

Tae Kwon Do

Youth ages 5 and over, this program will teach discipline, focus, endurance and flexibility. Master Tom Malone will help you achieve awesome kicks, punches and strikes while getting in shape. Students will be separated by skill level. *Deadline to register is one week prior to the class.*

111002-A Tuesdays, June 11-July 23 (no class 7/2)
10:40-11:25 a.m.

New Hope Ice Arena, 4949 Louisiana Ave N

111002-B Tuesdays, June 18-July 30 (no class 7/2)
6:15-7 p.m.

Davis Community Center (Meadowbrook School)
5430 Glenwood Ave N, Golden Valley
\$94 Residents of New Hope, Crystal, Golden Valley,
Robbinsdale and St. Louis Park
\$101 Nonresidents

Kid Smart Self Defense

Youth ages 6-12 will learn how to react to a stranger and defend themselves. Learn escapes, kicks and basic strikes in a game-like setting. Taught by Master Tom Malone. *Register by June 14.*

111004-A Friday, June 21
9-10:30 a.m.

New Hope Ice Arena, 4949 Louisiana Ave N
\$39 Residents of New Hope, Crystal, Golden Valley
and Robbinsdale
\$46 Nonresidents

Northwest Suburban Flag Football League

Flag football provides youth with physically active, non-contact continuous action.

Participants will learn teamwork, sportsmanship, and the fundamentals of the game. This league is a cooperative program between the cities of New Hope, Crystal, Plymouth and Robbinsdale. Thursday practices are held at Welcome Park in Crystal, with Sunday games played on Plymouth fields. Other weeknight games may be added. Practice and game schedules are tentative. All participants will be contacted before the season. *Register by August 23.*

110702-A Ages 5-6
110702-B Ages 7-8
110702-C Ages 9-10
110702-D Ages 11-12

Practices: August 29-October 17
6-7 p.m.

Games: Sundays, starting September 15
times vary, 4-8 p.m.

\$15 Residents of New Hope, Crystal and
Robbinsdale
\$22 Nonresidents

**Reduced registration fees are
offered in 2024 thanks to a
generous grant from
Hennepin County.**

VOLUNTEER COACHES NEEDED

Parent volunteer coaches are needed. Coaches will receive a refund of their child's program fee at the end of the program. Training available. For more information, please call 763-531-5155.

RevSports Soccer

RevSports Soccer maximizes the time a player spends with their own ball. Each day focuses on a topic, building on the previously learned topic, including dribbling, shooting, defending, passing and more. Each day ends with a scrimmage. Equipment provided (balls, jerseys, cones). Athletic footwear is required. Cleats and shin guards are optional. Open to all ability levels and run by RevSports Staff.

Hidden Valley Park, 8800 32nd Ave N

\$67 Residents of New Hope, Crystal and Robbinsdale

\$74 Nonresidents

Tuesdays, April 9-30

111205-A MiniStars, ages 5-7 6-6:40 p.m.

111206-A MightyStars, ages 6-9 6:45-7:25 p.m.

Tuesdays, May 7-28

111205-B MiniStars, Ages 5-7 6-6:40 p.m.

111206-B MightyStars, Ages 6-9 6:45-7:25 p.m.

Tuesdays, June 4-25

111205-C MiniStars, Ages 5-7 6-6:40 p.m.

111206-C MightyStars, Ages 6-9 6:45-7:25 p.m.

Tuesdays, August 13-September 3

111205-D MiniStars, Ages 5-7 6-6:40 p.m.

111206-D MightyStars, Ages 6-9 6:45-7:25 p.m.

Pee Wee Soccer

An introduction to soccer for active youth ages 5 and 6. Boys and girls will learn basic skills, rules, and sportsmanship while having fun with other youth their age. Fee includes a T-shirt. *Register by July 2.*

111202-A Tuesdays, July 9-30
6:40-7:25 p.m.

Liberty Park, 9015 60th Ave N

\$44 New Hope residents

\$51 Nonresidents

All Stars Soccer

This class is designed to perfect basic skills such as dribbling, passing and shooting. Participants ages 7-8 will play mini-games while having fun in a semi-competitive environment. Emphasis is placed on fun and sportsmanship. Fee includes a T-shirt. *Register by July 2.*

111203-A Tuesdays, July 9-30
7:30-8:15 p.m.

Liberty Park, 9015 60th Ave N

\$44 New Hope residents

\$51 Nonresidents



Athletic Associations

Plymouth/New Hope Little League

House league baseball for kids ages 6 to 12.

pnhll.org

Armstrong Cooper Youth Baseball

House and traveling baseball for kids ages 13 to 18.

acybaseball.com

Armstrong Cooper Fastpitch

Traveling softball for girls ages 8 to 18.

armstrongcooperfastpitch.org

Armstrong Falcon Youth Football

Tackle football for grades 2-8.

acyfa.com

Armstrong Cooper Youth Lacrosse

For kids ages 8U to 14U.

acyla.com

New Hope/Crystal/Plymouth Swim Club

gomotionapp.com/team/mnnhcp/page/home



American
Red Cross

Babysitting
Certification
Course

Red Cross Babysitting Training

This training provides youth ages 11-15 planning to babysit with the knowledge and skills necessary to safely and responsibly care for children and infants. Participants develop leadership skills, learn how to develop a babysitting business, keep themselves and others safe, help children behave and learn about basic child care. After class completion, participants will receive babysitting, pediatric CPR, and first aid certifications. Students will also receive a personal first aid kit, flashlight, student handbook, drawstring backpack and a personal CPR face shield and glove set. Participants should bring a peanut-free bag lunch and snacks. *Deadline to register is one week prior to the class.*

8 a.m.-6 p.m.

\$170 Residents of New Hope, Crystal, Golden Valley and Robbinsdale

\$177 Nonresidents

113501-A Saturday, April 20
New Hope City Hall, 4401 Xylon Ave N

113501-B Saturday, May 18

113501-C Saturday, July 13

113501-D Saturday, August 24

Brookview, 316 Brookview Parkway, Golden Valley

Safe at Home

An American Red Cross Licensed Training Provider teaches this class, which better prepares children ages 8 and older to be home alone. It covers common safety concerns of parents when their children are by themselves, such as arriving home, responsibilities, phone and internet safety, fire and gun safety, and much more. Parents are welcome and encouraged to attend the last 15 minutes of class. *Deadline to register is one week prior to the class.*

- 113504-A Monday, April 15
- 113504-B Monday, June 17
- 113504-C Monday, August 19
5:30-8:30 p.m.

Brookview, 316 Brookview Parkway, Golden Valley
\$59 Residents of New Hope, Crystal, Golden Valley
and Robbinsdale
\$66 Nonresidents

Private Piano Lessons

It's never too late to learn how to play the piano or revisit your faithful instrument after a long break. New Hope Parks and Recreation and Opus Music Academy have partnered to offer this new and exciting program for youth ages 7 and up and adults! Lessons heavily rely on material in a method book, and your instructor will let you know what book(s) to purchase before your lessons start. A keyboard is available during lessons, but participants will need access to a piano or keyboard for daily practice outside of lessons. *Registration deadline is one week prior to the session.*

- 110105-A Thursdays, April 4-25
- 110106-A Thursdays, May 2-23
- 110107-A Thursdays, June 6-27
- 110108-A Thursdays, July 11-August 1
- 110109-A Thursdays, August 8-29
30-minute timeslots from 3:30-7:30 p.m.

New Hope City Hall, 4401 Xylon Ave N
\$125 New Hope residents
\$132 Nonresidents



Opus Music Academy Camps Music Olympics

Ages 7-13 will explore the world of music through exciting challenges and games. From drumming games to friendly races, dance-offs and scavenger hunts, we'll learn and have a blast together. Get ready for a day filled with laughter, new friends and the joy of making music! *Register by June 3.*

- 110103-A Monday-Thursday, June 10-13
9 a.m.-12 p.m.

New Hope Performance Center, 4401 Xylon Ave N
\$125 Residents of New Hope and Crystal
\$132 Nonresidents

Songwriting Camp

Youth ages 7-13, unleash your creativity as you dive into the art of crafting heartfelt songs. Learn from experienced songwriters as you collaborate with fellow musicians and perform your creations. Get ready to write captivating lyrics and create musical magic! Participants will need to bring a laptop or tablet to class to connect to the internet. *Register by July 15.*

- 110103-B Monday-Thursday, July 22-25
9 a.m.-12 p.m.

New Hope City Hall, 4401 Xylon Ave N
\$125 Residents of New Hope and Crystal
\$132 Nonresidents

Follow Us on Facebook



The New Hope Parks and Recreation Department's Facebook page has over 2,200 fans that get the latest info about loads of fun activities and, occasionally, some good deals. Are you one of them?

Visit facebook.com/newhoperecreation today!

Musical Theater Camps

Participants will learn lines, songs and dances as they assemble their own musical! Learn how to properly speak your lines, block a scene, develop your character and much more! We will also play fun, creative games. All that is needed are comfortable clothing and light-weight sneakers or dance shoes. Friends and family are invited to a special performance beginning the final 30 minutes of the last class. *Register by April 4.*

Saturdays, April 13-May 18

Crystal Community Center, 4800 Douglas Drive
\$69 Residents of New Hope, Crystal, Golden Valley
and Robbinsdale
\$76 Nonresidents

"Frozen" (Ages 4-7)

113203-A 1-2:15 p.m.

"Wonka" (Ages 7-12)

113203-B 2:15-3:30 p.m.

Acting Camps

Kids, take the stage during acting camp! You'll develop as actors by learning a script, doing exercises and preparing for a performance. On Friday at 7 p.m., you'll present the group performance with costumes, props, makeup and scenery for our family and friends! Attendance at the performance is mandatory. Instructor is Linda Bruning who is assisted by Cyan Pampuch. *Register by July 29.*

Monday-Friday, August 5-9

New Hope Performance Center, 4401 Xylon Ave N

"In the Wings" (ages 5-7)

113200-A 9-10 a.m.

\$50 Residents of New Hope, Crystal and Golden Valley
\$57 Nonresidents

"Enter Stage Left" (ages 8-12)

Participants should bring a peanut-free lunch and drink.

113201-A 10:15 a.m.-1 p.m.

\$78 Residents of New Hope, Crystal and Golden Valley
\$85 Nonresidents



Three Rivers

PARK DISTRICT

Three Rivers Programs

Outdoor Exploration Camp

Youth ages 7-11 join Three Rivers Park District naturalists to search for wildlife and explore the forest, creek and hills of Bassett Creek Park. Practice survival skills, play disc golf, and connect with nature through art and natural dyes. We'll also take a field trip to Medicine Lake at French Regional Park for an off-site adventure! *Registration deadline is two weeks prior to the session.*

111101-F1 Monday-Thursday, August 19-22
9 a.m.-3 p.m.

Bassett Creek Park, 5609 32nd Ave N, Crystal
\$120 Residents of New Hope, Crystal, Golden Valley
and Robbinsdale
\$127 Nonresidents

Lil' Nature Explorer Camps

Youth ages 4-6 join naturalists from Three Rivers Park District for a playful morning of outdoor fun. Connect with nature through exploration activities like looking for birds, checking out bugs with hand lenses and playing games amongst the trees. We'll also meet an animal ambassador from Mississippi Gateway's Visitor Center! Each session will differ, so sign up for one or all four! *Registration deadline is two weeks prior to the camp.*

111100-A Friday, June 14

111100-B Friday, June 21

111100-C Friday, July 12

111100-D Friday, August 9

9:30 a.m.-12 p.m.

Northwood Park Shelter (west side near playground)
3815 Boone Ave N, New Hope

\$25 Residents of New Hope, Crystal, Golden Valley
and Robbinsdale

\$32 Nonresidents



Preschool Nature Exploration

Preschoolers ages 4-5 will explore and discover the world outside on naturalist-led hikes. Listen to nature stories, create crafts, play games and laugh with puppets. Each day of the session dives into a different topic related to nature. Choose Monday or Tuesday sessions, but not both in the same month. Westwood Hills Nature Center provides instruction, equipment and displays. *Registration deadline is one week prior to the session.*

1-3 p.m.

Westwood Hills Nature Center
8300 W Franklin Ave, St. Louis Park

Monday Minnows

111103-A1 Mondays, April 8-29

\$60 Residents of New Hope and Golden Valley

\$67 Nonresidents

111103-B1 Mondays, May 6-20

\$46 Residents of New Hope and Golden Valley

\$53 Nonresidents

Tuesday Turtles

111103-A2 Tuesdays, April 9-30

\$60 Residents of New Hope and Golden Valley

\$67 Nonresidents

111103-B2 Tuesdays, May 7-21

\$46 Residents of New Hope and Golden Valley

\$53 Nonresidents

Mites Nature Camp

These outdoor, nature-focused experiences offer preschool children ages 4-6 a chance to explore the wilderness and learn through hands-on activities and games based on each camp's theme. Westwood Hills Nature Center provides instruction, equipment and displays. *Registration deadline is nine days prior to the session.*

10 a.m.-12 p.m.

Westwood Hills Nature Center
8300 W Franklin Ave, St. Louis Park

\$15 Residents of New Hope, Crystal and Golden Valley

\$22 Nonresidents

111102-A Friday, June 21 - "Life Under a Log"

111102-B Friday, July 26 - "Insects"

111102-C Friday, August 16 - "Pond Study"



Eco Elsa Classes

Eco-Fashion Camp

Youth ages 7-14 will connect nature to current fashion as they discover grass weaving, making dyes from plants, and creating designs based on nature. They will also learn how to make fashion more sustainable through upcycling and recycling activities. Kids will take home most of their creations on the last day. *Register by June 3.*

111104-D Wednesday-Thursday, June 12-13
1-4 p.m.

Bassett Creek Park, 6001 32nd Ave N, Crystal
\$70 Residents of New Hope, Crystal, Golden Valley
\$77 Nonresidents

Adventure Quest

Youth ages 6-12 will dive into the secrets of the animal kingdom and discover how animals have adapted to survive through games and hands-on exploration activities! Then, they'll bring together the skills they've learned in the ultimate game of hide-and-seek tag: instincts for survival! Participants should bring a bag lunch. *Register by July 10.*

111104-E Friday, July 19
9 a.m.-3:30 p.m.

Bassett Creek Park, 6001 32nd Ave N, Crystal
\$75 Residents of New Hope, Crystal, Golden Valley
\$82 Nonresidents

Nature Detectives

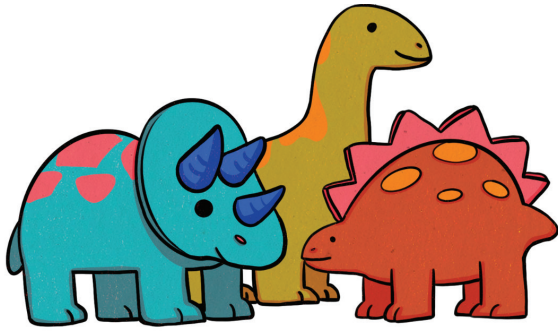
Someone is stirring up trouble in the park. Things are going missing, and strange clues are being left behind. Youth ages 7-14 will try to solve the mystery through fun activities and games that keep kids active and learning about the natural world. *Register by August 5.*

111104-F Wednesday-Thursday, August 14-15
1-4 p.m.

Bassett Creek Park, 6001 32nd Ave N, Crystal
\$70 Residents of New Hope, Crystal and Golden Valley
\$77 Nonresidents

REGISTER ONLINE

**SCAN
ME** 



Science Explorers

Dynamite Dinosaurs

Preschoolers aged 4-6 enter the Science Explorers' time machine and return to a world where dinosaurs ruled the earth. They'll become paleontologists, learn how enormous or small these fascinating creatures were and participate in a "mini" dino dig. You will have a dynamite time with hands-on experiments, studying fossils, and much more as we journey back in time. *Register by August 20.*

114101-A Tuesday-Thursday, August 27-29
10 a.m.-12 p.m.

Valley Place Park, 6822 32nd Ave N, Crystal
\$65 Residents of New Hope, Crystal, Golden Valley
and Robbinsdale
\$72 Nonresidents

Crazy Chemistry

Youth entering grades 1-6, join Science Explorers as we become crazy chemists! We will investigate the Periodic Table and learn about its families with fun and exciting experiments as we discover the science side of STEM. We will break some chemical bonds, get messy with polymers and much more. Our classes are hands-on, so be sure to dress for a mess! *Register by August 20.*

114101-C Tuesday-Thursday, August 27-29
1-3:30 p.m.

Valley Place Park, 6822 32nd Ave N, Crystal
\$80 Residents of New Hope, Crystal, Golden Valley
and Robbinsdale
\$87 Nonresidents



KidCreate Studio

Unicorn Slime

Youth ages 3-6, explore the magical, mystical unicorn universe with us! Learn the secret recipe for fabulous, glittery unicorn slime and take it home in a unicorn jar so sparkly that it's guaranteed to dazzle! Bring a nut-free snack and drink for your child.

Register by May 30.

113600-E Friday, June 7
9 a.m.-12 p.m.

Crystal Community Center, 4800 Douglas Drive
\$43 Residents of New Hope, Crystal and Golden Valley
\$50 Nonresidents

Dino Day

Hip, hip, hooray, it's Dino Day! If you love dinosaurs as much as we do, this class is for you! Artists ages 3-6 will explore different mediums as they tear, paint, glue and more; it'll be dino-riffic! Bring a nut-free snack and drink for your child. *Register by August 4.*

113600-W Monday, August 12
9 a.m.-12 p.m.

Brookview, 316 Brookview Parkway, Golden Valley
\$43 Residents of New Hope, Crystal and Golden Valley
\$50 Nonresidents



Epic Art Class

Youth ages 4-9 will create cute clay animal sculptures, sleepy sloths decked in adorable flower crowns, and more. We'll even tempt our sweet tooth while sculpting cool candy scenes with frosting, colorful candy and a Fruit Loop rainbow! Bring a nut-free snack and drink for your child. *Register by May 29.*

113600-F Thursday and Friday, June 6 and 7
1-4 p.m.

Crystal Community Center, 4800 Douglas Drive
\$92 Residents of New Hope, Crystal and Golden Valley
\$99 Nonresidents

Candle Making

Youth ages 9-14, create unique candles infused with your favorite scents, colors and hidden surprises. With the addition of delightful charms into the warm wax, your reveal candle will transform into a stunning masterpiece as the flame slowly burns down and reveals the secret treasures waiting to be discovered within. *Register by July 18.*

113600-G Friday, July 26
10 a.m.-12 p.m.

Crystal Community Center, 4800 Douglas Drive
\$45 Residents of New Hope, Crystal and Golden Valley
\$52 Nonresidents



State Fair Food

Youth ages 5-12, what's the best thing about the state fair? The food, of course! Our young artists will create the most delicious-looking art projects around! It will be yumminess on a stick! The kids will be creating, not eating this art project. Bring a nut-free snack and drink for your child. *Register by August 4.*

113600-X Monday, August 12
1-4 p.m.

Brookview, 316 Brookview Parkway, Golden Valley
\$43 Residents of New Hope, Crystal and Golden Valley
\$50 Nonresidents

Scent-sational Art

Youth ages 4-9 will draw, paint, sculpt and more, but we'll do it all with a very special twist- these "scent-sational" works of art will smell as sweet as they look! Learn the secret ingredients for sweet-smelling artwork as we create cute pointillism cupcakes, a field of tulips and more. Bring a nut-free snack and drink for your child. *Register by August 18.*

113600-Y Monday and Tuesday, August 26 and 27
9 a.m.-12 p.m.

Crystal Community Center, 4800 Douglas Drive
\$92 Residents of New Hope, Crystal and Golden Valley
\$99 Nonresidents

Mermaid Mirrors

Youth ages 5-10, turn a hand mirror into a beautiful mermaid mirror using Mod Podge, beads and charms. *Register by July 3.*

113100-D Friday, July 12
9:30-11:30 a.m.

Crystal Community Center, 4800 Douglas Drive
\$33 Residents of New Hope, Crystal, Golden Valley
and Robbinsdale
\$40 Nonresidents

Project Runway Sewing Camp

Youth entering grades 4-8 will join the Youth Enrichment League to learn multiple hand and machine sewing techniques. Students will make a swimsuit coverup, mini messenger bag, earbud case and their own personalized sewer's handbook. Students will make, showcase and take home all their projects. No experience is necessary. Friends and family are invited to a showcase presented by the students the final 30 minutes of the last class. *Register by August 12.*

113403-A Monday-Thursday, August 19-22
12-3 p.m.

Crystal Community Center, 4800 Douglas Drive
\$167 Residents of New Hope, Crystal, Golden Valley
and Robbinsdale
\$174 Nonresidents

Cupcake Like a Pro

Youth ages 8-14, take your cupcake decorating to the next level with tips and tricks from a professional baker at Sweet Heaven by Nne. Participants will create six cupcakes to take home. *Register by August 4.*

113404-A Tuesday, August 13
2-3 p.m.

Crystal Community Center, 4800 Douglas Drive
\$30 Residents of New Hope, Crystal, Golden Valley
and Robbinsdale
\$37 Nonresidents



Safety Camp

Your child will learn an incredible amount of safety information in three days. Participants will attend various safety sessions throughout the camp, which may include water safety, personal safety, home safety, fire safety and much more. We will also spend time playing park games and doing various activities. Safety Camp is for those entering grades 3-5 in fall 2024. Camp concludes with a graduation ceremony at 5 p.m. on August 15. Camp includes a T-shirt, snacks, lunches and a graduation event. Additional information will be emailed by August 8. *Register by July 12 to save \$5.*

113503-A Tuesday-Thursday, August 13-15
7:30 a.m.-4:30 p.m.
(program begins at 8 a.m.)

Civic Center Park, 4401 Xylon Ave N
\$55 if registered by July 12; \$60 after July 12
(Nonresidents of New Hope and Crystal add \$7 to the fee)



Thank you to our Safety Camp partners:

New Hope Parks and Recreation
New Hope Police Department
West Metro Fire-Rescue District

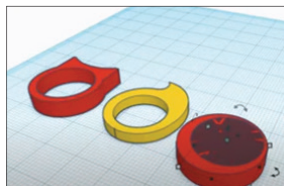
Additionally, we'd like to thank our generous Safety Camp sponsors (as of early January):

Broadway Awards
Jensen Sondrall Persellin & Woods, P.A.
Minneapolis Regional Chamber
New Hope Women of Today
Stantec

Tech Academy

3D Printed Jewelry

Youth ages 8-13, bring your creations to life in this 3D printing class. Learn to build 2D and 3D models on a computer using the Tinkercad app, then design and print a pair of earrings, a ring or a pendant. You will get to bring home two of your 3D creations. Printing and material fees are included. *Register by June 13.*



114301-A Monday-Thursday, June 24-27
9 a.m.-12 p.m.

Crystal Community Center, 4800 Douglas Drive
\$140 Residents of New Hope, Crystal, Golden Valley and Robbinsdale
\$147 Nonresidents

3D Printing: Star Wars

Youth ages 7-11 will design 3D objects using Tinkercad and the 3D slicing program Cura to bring their creations to life. Design a droid and complete different out-of-this-world CAD challenges. Two 3D models will be printed to bring home. Printing and material fees are included. *Register by June 13.*

114301-B Monday-Thursday, June 24-27
1-4 p.m.

Crystal Community Center, 4800 Douglas Drive
\$140 Residents of New Hope, Crystal, Golden Valley and Robbinsdale
\$147 Nonresidents

Hogwarts Film School

Youth ages 6-10, create your own stop-motion animation using characters from the Harry Potter and Fantastical Beasts series. Build and design magical-themed scenes and props, then handle all the technical details, including stop-motion, digital editing, special effects, and transitions to the movie. *Register by July 3.*

114301-C Monday-Thursday, July 15-18
9 a.m.-12 p.m.

Crystal Community Center, 4800 Douglas Drive
\$130 Residents of New Hope, Crystal, Golden Valley and Robbinsdale
\$137 Nonresidents

Ultimate Gamer-Bots

Youth ages 7-11, let the games begin! Designed by the experts at MIT, LEGO® WeDo Robotics' unique system teaches simple machines, engineering, programming, and so much more. Working in small teams, you will build and program intelligent robots based on popular games like Angry Birds, Chutes and Ladders, Hockey, Just Dance, Pinball, Duck Hunt and more! *Register by July 17.*

114301-D Monday-Thursday, July 29-August 1
9 a.m.-12 p.m.

Crystal Community Center, 4800 Douglas Drive
\$125 Residents of New Hope, Crystal, Golden Valley and Robbinsdale
\$132 Nonresidents

Gymnastics

Let's tumble, spin and twist our way through the summer! Our quality gymnastics staff will provide their expertise to help participants achieve better physical fitness, coordination and gymnastics skills while having a great time! The program has an ability-level curriculum to help you determine which class is best for your child.

Sandburg Middle School (Gym D)
2400 Sandburg Lane, Golden Valley
Tuesdays: June 11-July 30 (no class 7/2)
Wednesdays: June 12-July 31 (no class 7/3)
Thursdays: June 13-August 1 (no class 7/4)
Fridays: June 14-August 2 (no class 7/5)

Beginner Ages 4-5:

110801-C Wednesdays, 6-6:45 p.m.
110801-E Fridays, 8:30-9:15 a.m.
\$65 Residents of New Hope and Golden Valley
\$72 Nonresidents

Beginner/Advanced Beginner Ages 6-10:

110802-C Wednesdays, 6:45-7:45 p.m.
110802-D Thursdays, 5:15-6:15 p.m.
110802-D1 Thursdays, 6:15-7:15 p.m.
110802-E Fridays, 9:15-10:15 a.m.
\$73 Residents of New Hope and Golden Valley
\$80 Nonresidents

Intermediate Ages 6+:

110803-B Tuesdays, 5:15-6:30 p.m.
110803-C Wednesdays, 7:45-9 p.m.
110803-E Fridays, 10:15-11:30 a.m.
\$83 Residents of New Hope and Golden Valley
\$90 Nonresidents

Advanced/Advanced 2:

110805-B Tuesdays, 6:30-8:30 p.m.
110805-E Fridays, 11:30 a.m.-1:30 p.m.
\$114 for one Advanced class
\$169 for two Advanced classes for the same student
(Nonresidents of New Hope and Golden Valley add \$7)



Gymnastics Strength and Conditioning

This program is designed to help you build strength and endurance with fun and challenging workouts. We will utilize a variety of exercises to work your core, back, legs and arms. Conditioning drills are used to improve your cardio, muscle strength and balance to better prepare you for the next competitive season. Must be enrolled in an Intermediate or Advanced Gymnastics class.

110810-B Tuesdays, June 11-July 30
8:30-9 p.m. (no class 7/2)
110810-E Fridays, June 14-August 2 (no class 7/5)
1:30-2 p.m.

Sandburg Middle School (Gym D)
2400 Sandburg Lane, Golden Valley
\$56 Residents of New Hope and Golden Valley
\$63 Nonresidents

Tumbling Tots

Youngsters ages 2 to 4, along with a parent, will learn the basics of gymnastics including tumbling skills and the equipment used in the sport. They will get the benefit of developing their gross motor skills while having a lot of fun. A parent must participate!

Wednesdays, June 12-July 31 (no class 7/3)

110806-D1 Ages 2-3
4:30-5:15 p.m.
110806-D2 Ages 3-4
5:15-6 p.m.

Sandburg Middle School (Gym D)
2400 Sandburg Lane, Golden Valley
\$61 Residents of New Hope and Golden Valley
\$68 Nonresidents

Gymnastics Level Definitions

Beginner: Little or no gymnastics experience.

Advanced Beginner: For those who have mastered squat-through and straddle-over at first height level (vault); Six swings with regrasp to landing on feet, pullover and cast (bars); All walks and dismounts with no help (beam); Positions, jumps, rolls and cartwheels (floor).

Intermediate: With instructor approval, for those who have mastered squat-through and straddle-over at second height level (vault); Back hip circle and casting sole circle (bars); Scales, turns, basic jumps and higher level walks (beam); Higher level jumps, leaps, roundoff, handstand variations (floor).

Advanced: With instructor approval, for those who have mastered hands-on, feet-on, handstand off (vault); Long hang pullover (bars); All jumps, forward roll, front handspring dismount (beam); Back walkover, front handspring (floor).

Advanced 2: For those who have mastered front handspring (vault); Fly-away, kip on low bar (bars); Back walkover, hands-free dismount (beam); Roundoff to back handspring (floor).

Dance

Here is your chance to try a dance class! These classes are designed for new students or beginners. Instructor Melissa Guse will teach basic tap and ballet skills. No shoes or leotard needed. If you do purchase shoes, black tap and pink ballet shoes are required for the fall through spring classes. *Register by July 1.*



Mondays, July 8-August 12

110501-A Ages 3-5* 5-5:45 p.m.
110502-A Grades K-2^ 5:45-6:30 p.m.

New Hope Ice Arena Community Room
4949 Louisiana Ave N

\$60 New Hope residents
\$67 Nonresidents

(*Must be 3 by June 1, 2024)

(^Must be entering grade in fall 2024)

Dance Camp

Dancers entering grades 4-12, join us for three days of dancing fun! We will have special guest teachers who will help you perfect hip-hop steps, contemporary steps and ballet steps. This camp will consist of one hour of instruction from the guest teachers and 45 minutes of strength and conditioning overlap for all dancers. Open to new and existing dancers. Participants will need black tap and pink ballet shoes, a leotard or shorts and a T-shirt. *Register by July 9.*

Tuesday-Thursday, July 16-18

110503-A Grades 4-8 4-5:45 p.m.
110503-B Grades 9-12 5-6:45 p.m.

New Hope Ice Arena Community Room
4949 Louisiana Ave N

\$75 New Hope residents
\$82 Nonresidents

Learning Jet Field Trip

Youth ages 6-11, head to Holman Field and board a renovated Boeing 727-200 cargo jet as you learn all about aviation. Participants will get an up-close look at the various parts of a plane and learn what it takes to fly. There will also be a scavenger hunt and craft. Lunch included. *Register by March 27.*

113401-A Wednesday, April 10

Depart 8:15 a.m. from Crystal Community Center,
4800 Douglas Drive; Return about 3:45 p.m.

\$80 Residents of New Hope, Crystal, Golden Valley
and Robbinsdale

\$87 Nonresidents



Dick's House of Sport Field Trip

Come experience Dick's House of Sport in the Ridgedale Mall. Youth ages 6-12 will get the chance to try one of a kind in-store experiences like the Rock Wall and Multi-Sport Cage. All participants will receive a coupon at drop-off. Please pack a bag lunch as we will head to Ridgedale Commons Park after to eat lunch and explore. *Register by June 13.*

113400-S Friday, June 28

Drop off 9:30 a.m. Dick's House of Sport,
12547 Ridgedale Center, Minnetonka

Pick up 12:30 p.m. Ridgedale Commons Park,
12590 Ridgedale Drive, Minnetonka

\$22 Residents of New Hope, Crystal, Golden Valley
and Robbinsdale

\$29 Nonresidents

Horseback Riding Day Camps

Youth ages 6-11 will learn horse safety, stable care, grooming, saddling and basic riding. Each participant will ride a horse twice throughout the day. Lessons will be on well-trained horses and will take place indoors at the Caille Farm arena in Monticello. You will need to provide your own transportation. Long pants and tennis shoes are required. Participants should bring a nut-free bag lunch and drink. Helmets provided by Caille Farm. Note: a separate waiver will need to be signed by a guardian. *Registration deadline is one week prior to the lesson.*

113407 Wednesdays, June 12-August 28

(fee is per day)

9 a.m.-2 p.m.

Caille Farm, 9209 Iffert Ave NE, Monticello

\$114 per person per day



Sports Camps

These sports camps are a collaboration between the New Hope Parks and Recreation Department, Cooper High School and District 281 Summer Academy. For sports camps marked with an asterisk (*), residents are considered to be those living in the cities of New Hope, Crystal, Golden Valley or Robbinsdale. Participants must be entering a specified grade in the fall of 2024 or meet the age requirement by September 1, 2024.



Boys' Basketball Camp

This camp will help participants become more skilled and complete basketball players while having a blast. Players will work on drills to improve their skills in ball handling, shooting, rebounding, defense and game strategies. The camp will be led by Cooper Boys' head coach Bo Powell, his staff and players.

Monday-Thursday, June 24-27

150201-A1 Grades 3-5 9:15-11:45 a.m.

150201-A2 Grades 6-9 9:15-11:45 a.m.

New Hope Community Gyms, 8230 47th Ave N
(North end of Cooper High)

\$69 Residents*

\$76 Nonresidents

Girls' Basketball Camp

Learn the fundamentals of ball handling, shooting, rebounding, defense and basketball game strategies. Participants will take home a variety of drills and basketball knowledge that will help make them better players. The camp will be led by Cooper High School head coach Bo Powell, his staff and players.

Monday-Thursday, June 24-27

150201-B1 Grades 3-5 9:15-11:45 a.m.

150201-B2 Grades 6-9 9:15-11:45 a.m.

New Hope Community Gyms, 8230 47th Ave N
(North end of Cooper High)

\$69 Residents*

\$76 Nonresidents

Soccer Camp

Don't miss your opportunity to participate in this fun and instruction-filled soccer camp for both boys and girls this summer. Players will focus on dribbling, passing, shooting, and basic tactics. All learning will involve game-like activities to keep the players moving. The camp will be led by Armstrong/Cooper girls' head coach Nick Wetherall, his staff and players.

\$69 Residents*

\$76 Nonresidents

Monday-Thursday, July 22-25

150900-A Grades K-2 9:15-11:45 a.m.

150900-B Grades 3-5 12:30-3 p.m.

Plymouth Middle School, 10011 36th Ave N

Monday-Thursday, July 29-August 1

150900-C Grades 6-8 9:15-11:45 a.m.

Sandburg Middle School

2400 Sandburg Lane, Golden Valley

Track Camp

Work with Armstrong High School head girls' track coach Derek Fisher and varsity athletes as you develop speed, strength, flexibility and confidence. Specific skills will be taught for each event, and individualized attention given to help develop each athlete.

Monday-Thursday, August 5-8

151200-A Grades 3-5 9:15-11:45 a.m.

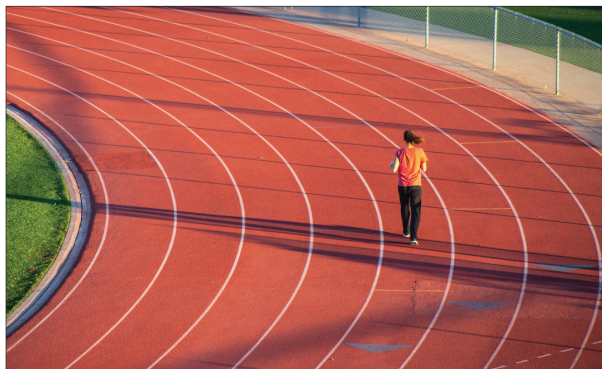
151200-B Grades 6-9 9:15-11:45 a.m.

Cooper High School stadium

8230 47th Ave N, New Hope

\$69 Residents*

\$76 Nonresidents





Tennis Camp

Bring a racquet and join us for these awesome camps! Youth in grades 6-9 will work on singles and doubles skills. This camp is geared toward the more competitive tennis player. For grades 3-5, the beginner camp will include games, activities and some match play as participants

develop their skills. Both camps will be led by Armstrong assistant tennis coach Mallory Lithun, her staff and players.

Monday-Thursday, July 29-August 1

151100-A Grades 3-5 9:15-11:45 a.m.

151100-B Grades 6-9 9:15-11:45 a.m.

Civic Center Park tennis courts

4401 Xylon Ave N, New Hope

\$69 Residents*

\$76 Nonresidents

Volleyball Camp

This summer, improve your serving, passing, hitting, digging and blocking skills. This camp will help participants improve their game and prepare for the upcoming season. This camp includes daily giveaways and is run by RevSports staff.

Monday-Thursday, July 8-11

151301-A1 Grades 1-2 10:15-11:45 a.m.

151301-A2 Grades 3-5 10:15-11:45 a.m.

Plymouth Middle School, 10011 36th Ave N

\$99 Residents*

\$106 Nonresidents

151301-A3 Grades 6-8 12:30-3 p.m.

Sandburg Middle School, 2400 Sandburg Lane

\$139 Residents*

\$146 Nonresidents

Flag Football Camp

This program will include passing, receiving, ball-carrying, defending hand-offs, running routes and more. The camp is coordinated by nationally licensed coach John Richardson and led by Revolutionary Sports coaches.

Monday-Thursday, August 5-8

151901-A Grades 1-2 10:15-11:45 a.m.

151901-B Grades 3-5 10:15-11:45 a.m.

151901-C Ages 4-6 8:30-10 a.m.

\$99 Residents*

\$106 Nonresidents

Plymouth Middle School, 10011 36th Ave N

151901-D Grades 6-8 12:30-3 p.m.

Sandburg Middle School, 2400 Sandburg Lane

\$139 Residents*

\$146 Nonresidents

Skateboard Camp

Come ride and learn tips and tricks! Individual skills/tricks taught will include balance, stopping, turning, Ollie, Nollie, heel flips and kickflips. A skateboard and helmet are required. We also recommend knee pads, elbow pads and wrist guards. Please bring a water bottle and wear sunscreen. Fee includes a shirt. Run by RevSports staff.

Monday-Thursday, June 24-27

150800-A Grades 1-3 1:30-3:30 p.m.

150800-B Grades 4-6 1:30-3:30 p.m.

New Hope Skate Park, 4401 Xylon Ave N

\$149 Residents*

\$156 Nonresidents

Gymnastics Camp

Participants in the beginner/advanced beginner camp will be introduced to all the equipment and receive one-on-one instruction. Intermediate and advanced gymnasts will spend the week refining their skills in the vault, beam, bars and floor routines. The week will be filled with contests, games, free time to practice new skills and lots of fun! The camp will be led by gymnastics coordinator Rhonda Bitzer and her staff.

Sandburg Middle School (Gym D)

2400 Sandburg Lane, Golden Valley

Monday-Thursday, August 5-8

150500-A1 Beginner, Grades 1-6
9:15-11:45 a.m.

150500-A2 Beginner/Adv. Beginner, Grades 1-6
12:30-3 p.m.

\$74 Residents*

\$81 Nonresidents

150500-A3 Intermediate/Advanced/Tumblers Team
6-8 p.m.

\$108 Residents*

\$115 Nonresidents

Monday-Thursday, August 12-15

150500-B1 Beginner/Adv. Beginner, Grades 1-6
12:30-3 p.m.

\$74 Residents*

\$81 Nonresidents

150500-B2 Tumblers Team Camp
10 a.m.-12 p.m.

\$108 Residents*

\$115 Nonresidents

150500-B3 Beginning/Adv. Beginner, Grades 1-6
5:15-7:15 p.m.

\$66 Residents*

\$73 Nonresidents

Monday-Thursday, August 19-22

150500-C1 Intermediate/Advanced/Tumblers Team
6-8 p.m.

\$108 Residents*

\$115 Nonresidents



Ninja Warriors Camp

Swing, traverse, climb and balance across, through and over challenging obstacles that change each day. We'll also participate in a few friendly competitions. Fee includes a shirt. Run by RevSports staff.

Monday-Thursday, August 12-15

151500-A Grades 1-2 8:30-10 a.m.

151500-B Grades 3-5 10:15-11:45 a.m.

151500-C Ages 4-6 12:30-2 p.m.

Plymouth Middle School, 10011 36th Ave N

\$119 Residents*

\$126 Nonresidents

Pickleball Camp

Join the pickleball craze! Learn the fundamentals including forehand and backhand ground strokes, volleys and serves. Equipment is provided. Camp includes daily giveaways. Run by RevSports staff.

Monday-Thursday, June 24-27

151101-A Grades 1-3 1:30-3:30 p.m.

151101-B Grades 4-6 1:30-3:30 p.m.

Civic Center Park tennis courts, 4401 Xylon Ave N

Monday-Thursday, August 12-15

151101-C Grades 1-3 1:30-3:30 p.m.

151101-D Grades 4-6 1:30-3:30 p.m.

Becker Park pickleball courts, 5500 West Broadway

\$119 Residents*

\$126 Nonresidents

Quidditch Camp

Calling all Harry Potter fans! This game resembles a combination of rugby, dodgeball and handball. Learn scoring, defending, passing and teamwork. Fee includes a shirt. Run by RevSports staff.

Monday-Thursday, June 17-20 (no camp 6/19)

151700-A Grades 1-2 10:15-11:45 a.m.

151700-B Grades 3-5 10:15-11:45 a.m.

Plymouth Middle School, 10011 36th Ave N

\$89 Residents*

\$96 Nonresidents

151700-C Grades 6-8 12:30-3 p.m.

Sandburg Middle School, 2400 Sandburg Lane

\$169 Residents*

\$176 Nonresidents

Golf Camp

"Putt" away the electronics and "drive" some fun into your week! Learn proper grip, stance and swing with all clubs and participate in some friendly competitions. Fee includes a shirt. Run by RevSports staff.

Monday-Thursday, June 24-27

151800-A Grades 1-2 8:30-10 a.m.

151800-B Grades 3-5 8:30-10 a.m.

Plymouth Middle School, 10011 36th Ave N

\$119 Residents*

\$126 Nonresidents

151800-C Grades 6-8 12:30-3 p.m.

Sandburg Middle School, 2400 Sandburg Lane

\$169 Residents*

\$176 Nonresidents



Archery Camp

This camp will cover safety and technique as participants learn proper grip, aim and release. There will also be friendly competitions. All equipment provided. Fee includes a shirt. Run by RevSports staff.

Monday-Thursday, June 17-20 (no camp 6/19)

151604-A Grades 1-2 8:30-10 a.m.

151604-B Grades 3-5 8:30-10 a.m.

Plymouth Middle School, 10011 36th Ave N

\$89 Residents*

\$96 Nonresidents

151604-C Grades 6-8 12:30-3 p.m.

Sandburg Middle School, 2400 Sandburg Lane

\$169 Residents*

\$176 Nonresidents

Funds Available

Funds are available for New Hope families who need assistance with registration fees for their child or teen to participate in recreation programs. Applications must be completed in person. Proof of residency with a valid picture ID is required. Families who qualify will be asked to pay half of the program fee. Not available for private lessons, competition teams, costumes, admission fees, golf league or rounds, trips or special events. For more information call 763-531-5151.

Olympic Sports Camp

This camp will cover some of the more unique Olympic sports, including archery, badminton, cricket, team handball and more. Kids will learn the fundamentals of each sport and participate in some friendly competitions. Fee includes a shirt. This camp will be run by RevSports staff.

Monday-Thursday, July 15-18

150100-A Grades 1-2 8:30-10 a.m.

150100-B Grades 3-5 8:30-10 a.m.

Plymouth Middle School, 10011 36th Ave N

\$119 Residents*

\$126 Nonresidents

Baseball Camp

Participants will learn the fundamentals of baseball including catching, grounders, throwing, hitting, base running and fielding. Each day ends with an inning of play. This camp will be run by RevSports staff.

Monday-Thursday, August 5-8

150601-A Grades 1-2 8:30-10 a.m.

150601-B Grades 3-5 8:30-10 a.m.

150601-C Ages 4-6 10:15-11:45 a.m.

Plymouth Middle School, 10011 36th Ave N

\$99 Residents*

\$106 Nonresidents

Sports Extravaganza

Kids in grades 1-6 will enjoy learning and playing new and familiar sports. Each day will consist of four or more sports. Kids will be grouped by age and skill level. Participants should bring a water bottle, lunch and snacks. Fee includes a shirt. This camp will be run by RevSports staff.

Monday-Friday, August 19-22

151602-C 9 a.m.-4 p.m.

Monday-Friday, August 26-29

151602-C1 9 a.m.-4 p.m.

\$299 Residents*

\$306 Nonresidents

Crystal Community Center, 4800 Douglas Drive



Inclusion and Adaptive Recreation

Inclusions

Reach For Resources: 952-200-3030

Reach for Resources provides inclusion facilitators for children and adults with disabilities who would like to participate in non-adapted New Hope Parks and Recreation programs. Registrations for these programs are done through the Parks and Recreation department.

If you would like inclusion services, please indicate when registering. A questionnaire will then be emailed/mailed to you. Upon return of the questionnaire, staff will contact REACH to set up your inclusion. A minimum of two weeks is requested for a successful inclusion.

Adaptive Recreation Resources

Windows of Opportunity: 763-504-6999

Windows of Opportunity is a program of the Robbinsdale School District #281 and provides recreation, education and support for people with disabilities ages 16 and up.



Parent + Child

RevSports Tennis

Children ages 3-5 will work one-on-one with their parent as they develop their hand-eye coordination while learning the basics of tennis. Equipment provided or bring your own racquet. Open to all ability levels and run by RevSports Staff.

131501-A Tuesdays, April 9-30
131501-B Tuesdays, May 7-28
131501-C Tuesdays, June 11-July 9 (no class 7/2)
131501-D Tuesdays, July 16-August 6
5:15-5:40 p.m.
Civic Center Park tennis courts, 4401 Xylon Ave N
\$67 Residents of New Hope, Crystal and Robbinsdale
\$74 Nonresidents

RevSports Soccer

These parent-involved programs for ages 3-5 maximize the time a player spends with their own ball. The program will focus on the skills of dribbling, shooting, defending, passing and more. Each day will end with a scrimmage. Equipment provided (balls, jerseys, cones). Athletic footwear required. Cleats and shin guards are optional. Open to all ability levels and run by RevSports Staff.

131204-A Tuesdays, April 9-30
131204-B Tuesdays, May 7-28
131204-C Tuesdays, June 4-25
131204-D Tuesdays, August 13-September 3
5:15-5:55 p.m.
Hidden Valley Park, 8800 32nd Ave N
\$67 Residents of New Hope, Crystal and Robbinsdale
\$74 Nonresidents



Lil' Kickers Soccer

Have a lil' one who loves to kick a ball around? This parent-child class for ages 3-5 will have parents working one-on-one with their child in a fun, supportive environment to learn basic soccer skills, such as kicking, dribbling, trapping, and shooting. Fee includes a shirt. *Register by July 2.*

Tuesdays, July 9-30
131201-A1 5-5:45 p.m.
131201-A2 5:50-6:35 p.m.
Liberty Park, 9015 60th Ave N
\$44 New Hope residents
\$51 Nonresidents



Lil' Sluggers

Parents, work one-on-one with your 3-5 year old and help them learn the basic skills of throwing, catching and batting in this fun and supportive environment. Bring a glove and water bottle. Rain make-up is August 14. *Register by June 19.*

131205-A1 Wednesdays, June 26-August 7
6-6:45 p.m. (no program 7/3)
Liberty Park, 9015 60th Ave N
\$45 Residents of New Hope
\$52 Nonresidents

Badges and Bobbers

Here is an opportunity for youth ages 5 and older to meet local police officers and spend time fishing together. All levels of fishing experience are welcome. Learn how to bait, cast and reel. Participants must be registered and anyone under the age of 15 must be accompanied by an adult. *Register by August 30.*

131105-B Saturday, September 7
9 a.m.-12 p.m.
Crystal Lake Fishing Pier
4237 Shoreline Dr, Robbinsdale
Free! Pre-registration required.



Eco Elsa Classes

Nature-based programming for preschoolers ages 3-6 with an adult. Please dress for the weather and wear closed-toe shoes.

10 a.m.-12 p.m.

Bassett Creek Park, 6001 32nd Ave N, Crystal
\$27 per pair residents of New Hope, Crystal,
and Golden Valley

\$34 Nonresidents

\$12 Additional child

Nature Art

Learn about art mediums through nature and how they connect to different science principles. Activities may include making sustainable nature sculptures, paint and dye colors, fiber weaving, animal footprints and more! *Register by June 3.*

131104-A Wednesday, June 12

Musical Nature Explorers

Learn how animals make noise while also getting to explore and make your own noises. We'll learn about rhythm, make our own instruments using natural and/or recycled materials and more. *Register by July 17.*

131104-B Friday, July 26

Nature Games

Learn nature games and activities to help you and your kids stay active outdoors this summer. Learn trail games and activities that can be used while in any backyard or park. Dress for the weather and be ready to play. *Register by August 5.*

131104-C Wednesday, August 14

Family Outdoor Survival

Join us for this Eco Elsa program! Adults and children ages 5 and older (youth under 16 must be with an adult) will learn skills through fun games and activities that will help them learn what to do in a survival situation. Participants will leave knowing the rules of three, how to signal and look for help, shelter engineering, fire science and safety and basic water treatment skills. *Register by May 23.*

131104-D Saturday, June 1

9 a.m.-12 p.m.

Northwood Park, 3815 Boone Ave N (west side)
\$20 per person Residents of New Hope, Crystal,
Golden Valley and Robbinsdale

\$27 Nonresidents

Three Rivers Programming

Morning Bird Walk

Youth ages 6 and older and adults, enjoy a gentle walk to seek out the birds that have returned from a long winter away from the park. All levels of interest are welcome. Binoculars are provided. Participants 13 and younger must be with a paying/participating adult. *Register by April 7.*

132100-F Sunday, April 14, 9-11 a.m.

Sohacki Park, 3500 June Ave N, Robbinsdale

\$6 per person Residents of New Hope, Crystal,
Golden Valley and Robbinsdale

\$13 Nonresidents

Early Morning Bird Walk

Birds are returning from their winters in the tropics. Youth ages 8 and older and adults, enjoy a gentle walk while searching for spring migrants with our eyes and ears. All levels of birders welcome; bring your own binoculars or use ours. Participants 13 and younger must be with a paying/participating adult. *Register by April 26.*

132100-F1 Saturday, May 4, 7:30-9 a.m.

Sohacki Park, 3500 June Ave N, Robbinsdale

\$6 per person Residents of New Hope, Crystal,
Golden Valley and Robbinsdale

\$13 Nonresidents

Forts and Fires

Youth ages 4 and up and an adult, test your outdoor survival skills by using materials in the forest to build a shelter. Then learn techniques for starting campfires and build a survival fire for your team. Participants 13 and younger must be with a paying/participating adult. *Register by April 17.*

132100-G Wednesday, April 24, 5:30-7 p.m.

Sohacki Park, 3500 June Ave N, Robbinsdale

\$6 per person Residents of New Hope, Crystal,
Golden Valley and Robbinsdale

\$13 Nonresidents

Critter Count

Youth ages 4 and up and an adult will use tools and our senses to search for critters and their clues within the park. Magnifying glasses, nets, and binoculars provided. How many types of critters will we discover? Participants 13 and younger must be with a paying/participating adult. *Register by May 8.*

132100-N Wednesday, May 15, 6-7:30 p.m.

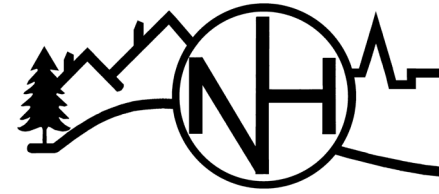
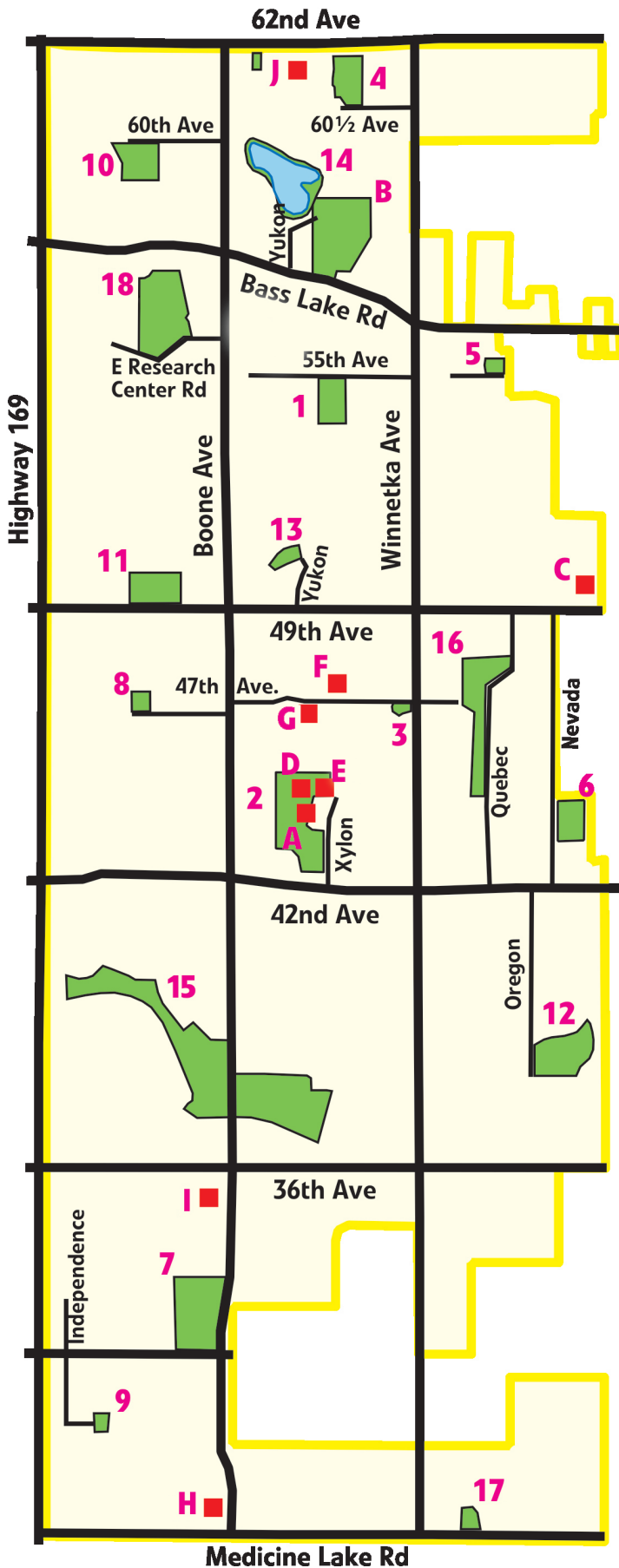
Sohacki Park, 3500 June Ave N, Robbinsdale

\$6 per person Residents of New Hope, Crystal,
Golden Valley and Robbinsdale

\$13 Nonresidents



Parks



1.	Begin Park 5407 Wisconsin Ave
2.	Civic Center Park 4401 Xylon Ave
3.	Corner Park 4653 47th Ave
4.	Dorothy Mary Park 8030 60½ Ave
5.	Elm Grove Park 5500 Quebec Ave
6.	Fred Sims Park 4350 Nevada Ave
7.	Hidden Valley Park 8800 32nd Ave
8.	Holiday Park 9024 47th Ave
9.	Jaycee Park 3028 Independence Cir
10.	Liberty Park 9015 60th Ave
11.	Lighted Field 8810 49th Ave
12.	Lions Park 3810 Oregon Ave
13.	Little Acre Park 4948 Zealand Ave
14.	Meadow Lake Park 8400 E. Meadow L
15.	Northwood Park 3815 Boone Ave
16.	Sunnyside Park 4751 Quebec Ave
17.	Terra Linda Park 2701 Lamphere Dr
18.	Victory Park 5500 International Pkwy
A.	New Hope City Hall 4401 Xylon Ave
B.	Golf Course 8130 Bass Lake Rd
C.	Ice Arena 4949 Louisiana Ave
D.	Performance Center 4401 Xylon Ave.
E.	Aquatic Park 4411 Xylon Ave
F.	Community Gyms/Cooper High 8
G.	New Hope Learning Center 8301 47
H.	Robbinsdale Spanish Immersion 8
I.	Sonnesyn Elementary 3421 Boone Av
J.	Meadow Lake Elementary 8525 62n

	Acreage	Ballfields - Multi-Use	Fields - Soccer, Football, Lacrosse	Basketball Courts	Batting Cage	Concession Stand	Disc Golf	Dog Park - Offleash	Drinking Fountain	Golf - 9-Hole, Par 3	Grills	Gyms - Multi-Use, Full-Size	Horseshoe Courts	Nature Area	Outdoor Pool	Parking Lot	Pathways	Performance Stage	Picnic Areas	Pickleball Courts	Pickleball (Lines on Tennis Courts)	Play Equipment	Shelter - Enclosed	Shelter - Picnic	Skate Park	Skating Rink	Tennis Courts	Volleyball Court - Sand	Walking Track - Indoor	
	4.76	◆		◆					◆													◆					2L			
	18.23			L		◆			◆						◆	◆	◆	◆	◆		2L	◆		*	◆		4L	L		
	0.6			◆																		◆								
	6.06												◆				◆													
	1.44																		◆				◆							
	5.74			◆									◆				◆		◆				◆	◆						
	16.41		◆	◆					◆		◆		◆			◆	◆		◆		2L	◆	◆	*		OL	3L			
	1.47	◆							◆										◆				◆	◆						
	1.32																		◆				◆							
	6.16	◆	◆	◆				S	◆								◆		◆				◆	◆		OL				
	7.57	2L			◆				◆							2	◆													
	8.84	2		◆				S	◆			2				◆	◆		◆				◆	◆		OL				
	2.07	◆		◆					◆								◆		◆				◆	◆						
Lake Rd	1.4												◆				◆		◆				◆							
	47.41	2	◆	◆					◆		◆		◆		2	◆	◆		◆				◆	◆	*					
	10.99	◆		◆			◆									◆	◆		◆				◆							
	1.4								◆								◆						◆	◆						
	8	L	L						◆							◆	◆													
									◆	◆	◆								◆											
									◆							◆								◆	*					
									◆							◆											2I		◆	
									◆							◆														
									◆							◆														
230 47th Ave					◆	◆			◆			2				◆														
th Ave		◆	◆													◆							◆							
308 27th Ave		◆	◆													◆							◆							
e		2		◆												◆	◆						◆							
nd Ave		4							◆								◆			8L			◆					3L		

* - Reservable I - Indoor O - Outdoor L - Lighted S - Seasonal



Story and Craft Time

Youth ages 2-5 and an adult will enjoy story time featuring a popular children's book, then create a fun craft based on that book. *Deadline to register is one week prior.*

9:30-11:30 a.m.

Crystal Community Center, 4800 Douglas Drive
\$27 per pair residents of New Hope, Crystal,
Crystal, Golden Valley and Robbinsdale
\$34 per pair nonresidents

"The Very Hungry Caterpillar"

133501-F Tuesday, June 11

"The Rainbow Fish"

133501-G Tuesday, July 23

"Dragons Love Tacos"

133501-H Friday, August 16

Science Explorers

Mixture Madness

Preschoolers ages 3-5, bring along a parent or your favorite adult for a fun and friendly hands-on chemistry class as we explore states of matter, absorption and more. Be sure to dress so you can get messy! *Register by April 5.*



133602-A Saturday, April 13
1-2:30 p.m.

Crystal Community Center, 4800 Douglas Drive
\$23 per pair residents of New Hope, Crystal,
Golden Valley and Robbinsdale
\$30 Nonresidents



Kidcreate Studio

Spring Flowers

Youth ages 1 ½ to 6 and an adult will create a spring masterpiece complete with a garden full of flowers and a 3D butterfly. *Register by April 11.*

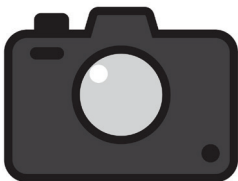
133601-A Friday, April 19
9:30-10:30 a.m.

Crystal Community Center, 4800 Douglas Drive
\$25 per pair Residents of New Hope, Crystal,
and Golden Valley
\$32 Nonresidents



Stormy Weather?

If you are concerned that a class might be canceled because of bad weather, call the Weather Line at 763-531-5158.



Smile!

The City of New Hope sometimes takes photos and video of recreation programs and uses those images in promotional materials.

REGISTER ONLINE



Special Events

Bike Rodeo

Bike riding offers fun, freedom and exercise, and we want kids and families to ride their bikes as much as possible, all while being safe. Riders will have the opportunity to get their helmet properly fitted, navigate their bikes through a safety skills course, and get their bike checked for safety. Police and fire personnel will be in attendance to oversee these activities. Participants can also be entered into a door prize drawing to win a new bike! *Sponsored by the cities of New Hope, Crystal, Golden Valley and Robbinsdale.*

Thursday, May 2, 6-8 p.m.

Lakeview Terrace Park

3769 Crystal Lake Blvd, Robbinsdale

Free!



Wet and Wild Water Day

The cities of New Hope, Crystal and Robbinsdale, along with the West Metro Fire District, have joined together to offer this splash-splashing event. This wet and wild event will include three giant water slides, a kiddie slide and sprinkler fun provided by West Metro Fire's aerial truck. A wristband is required to participate. Note: This event will be cancelled if raining and will not be rescheduled. *Save money by registering by July 29.*

Friday, August 2, 12:30-3 p.m.

Valley Place Park, 6822 32nd Ave N, Crystal

\$7 per person by July 29; \$10 per person at event; free for ages 2 and under



Young Mudder

Kick off the summer by getting down and dirty at the sixth Annual Young Mudder! Youth ages 6-12 will have the opportunity to run through unique obstacles (including a few new ones!) that are both challenging and messy. West Metro Fire-Rescue will be there to help you get washed up before heading home. A parent or guardian must be present during the event. Parents are also welcome to register and participate with their child. *Register by May 24 to be guaranteed a t-shirt!*

Saturday, June 8, 9-11:30 a.m.

110104-A Youth

110104-B Parent/Guardian

Valley Place Park, 6822 32nd Ave N, Crystal

\$25 per person



Save the Date! Vehicle Fair is Sept. 21

A wide variety of trucks and cars will be on display to explore. It's a great photo opportunity!

Saturday, September 21, 10 a.m.-12 p.m.

Crystal Community Center, 4800 Douglas Drive

Free!





Music in the Park

Families, join us for an evening of music in the park at the New Hope Performance Center! New this year, one or two food trucks will be on site for the evening performances. Bring a blanket or lawn chair for the built-in seating or on the grass.

7-8:30 p.m.

New Hope Performance Center, 4401 Xylon Ave N
Free!

Absolutely Elvis - May 29

Todd Anderson's voice, costumes and moves are an exciting depiction of an actual Elvis concert. He delivers the powerful ballads and tender love songs that Elvis made famous. *Sponsorship available.*

Minneapolis Commodores Barbershop Acapella Chorus - June 5

This men's acapella chorus features singing styles ranging from spirituals, vocal swing jazz, pop, country and up-tempo Christmas selections. Their motto is, "We never just stand on the risers and sing...We Perform"! *Sponsored by Herself Health.*

Kid Power with Rachael - June 12 (morning)

***This is a morning performance from 10-11:15 a.m.**

Families, get ready to have fun and dance along in this high-energy, interactive, entertaining and educational animal program featuring Rachael Kroog. *Sponsored by At Ease Health & Wellness and Empower You Physical Therapy.*

Los Rebeldes - July 10

This Mexican American group from southern Minnesota has been performing since the early 1980s. Their style from the north blends with the traditions of the south to bring the musical styles of Tex-Mex, conjunto, country, folk-rock, and cumbia alive on stage. *Sponsorship available.*

2024 Sponsorships Available

Are you interested in sponsoring or donating to New Hope Parks and Recreation? Sponsorships are available for summer 2024 Music in the Park, Movies in the Park and Safety Camp. Contact Aaron Thelen, Recreation Supervisor, at athelen@newhopemn.gov if interested.

Pan Handlers Steel Drum Band - July 31

The Pan Handlers steel drum band was founded in 2014 by Chops Inc, performing at venues throughout the Twin Cities metro. With a mix of Caribbean, rock and pop music, the tropical sound and varied song selection is guaranteed to get your body moving and your spirit soaring. *Sponsorship available.*

The Michael Handler Project - August 7

An acoustic duo (with percussion) that plays a huge variety of popular music from all genres from Tom Petty to Lizzo, you never quite know what will be next on the set list. But whether it's a sing-along classic like Don't Stop Believing or Wonderwall, you can be guaranteed to have a good time. *Sponsorship available.*

The Dollys - August 28

This group features three vocalists harmonizing to songs from Dolly Parton, Linda Ronstadt, Emmylou Harris, Gillian Welch, Loretta Lynn, Waylon and Willie and more! It's traditional country, roots, Americana music backed by a brilliant array of talented musicians. *Sponsorship available.*

NEW!

Food trucks will be on site during Music in the Park evening performances!



MOVIES IN THE PARK

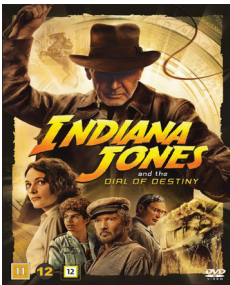
Movies in the Park

Family movies in the park! Movies will be shown on a jumbo screen at the New Hope Performance Center. Concessions will be available for purchase (provided by the New Hope Dance Booster Club). Bring your own blanket or chair. Come a little early to get your spot and participate in pre-movie activities!

New Hope Performance Center, 4401 Xylon Ave N

Movies start at dusk

Free!



"Indiana Jones and the Dial of Destiny" - Thursday, June 13

Daredevil archaeologist Indiana Jones races against time to retrieve a legendary dial that can change the course of history. Accompanied by his goddaughter, he soon finds himself squaring off against Jurgen Voller, a former Nazi who works for NASA. Rated PG-13. *Sponsored by New Hope Women of Today.*



"Cool Runnings" - Thursday, August 1

Four Jamaican bobsleighters dream of competing in the Winter Olympics, despite never having seen snow. With the help of a disgraced former champion desperate to redeem himself, the Jamaicans set out to become worthy of Olympic selection and go all out for glory. Rated PG. *Sponsored by A.C. Carlson Inc.*



"Coco" - Thursday, August 22

A boy named Miguel dreams of becoming a famous guitar player, despite the misgivings of his close-knit family. When his lofty ambitions cause him to run afoul of a curse, he must journey into the Land of the Dead to seek forgiveness from his ancestors. Rated PG. *Sponsored by New Hope Lions.*



New Hope Summer Theatre

Off-Broadway Musical Theatre will present “Bye Bye Birdie” in the summer of 2024. A loving send-up of 1950s small-town America, teenagers and rock & roll, “Bye Bye Birdie” remains as fresh and vibrant as ever. Teen heartthrob Conrad Birdie has been drafted, so he chooses All-American girl Kim MacAfee for a very public farewell kiss. Birdie continues to thrill audiences everywhere, featuring a tuneful, high-energy score, plenty of great parts and a hilarious script. American Sign Language date will be Friday, July 26 (rain make-up Saturday, July 27).

Wednesdays-Saturdays, July 17-27
8 p.m.

New Hope Performance Center, 4401 Xylon Ave N

A free-will donation of \$5 per person is suggested to help cover the cost of production. Food shelf donations for PRISM will also be accepted.

Auditions

Off-Broadway Musical Theatre is holding open auditions for its production of “Bye Bye Birdie.” Anyone age 7 and older who is interested in being involved in the show is invited to audition. For more information, call 763-592-6805 or visit their website at obmt-newhope.org.

Friday, April 19 from 5-10 p.m.

Saturday, April 20 from 9 a.m.-4 p.m.

Call backs: Sunday, April 21 from 12-4 p.m.

New Hope City Hall, 4401 Xylon Ave N

Volunteers Needed

The show must go on... but not without your help. The Off-Broadway Musical Theatre seeks volunteers ages 16 and over to bring “Bye Bye Birdie” to New Hope’s Performance Center this summer. No experience necessary! For more information, call 763-592-6805 or visit obmt-newhope.org.

Golf Course Plant Sale

The New Hope Golf Course will be hosting a plant sale later this spring. Tons of annuals and perennials will be available for a nominal cost.

Saturday, May 11

8 a.m.-1 p.m.

New Hope Golf Course, 8130 Bass Lake Road



Citywide Garage Sale

New Hope’s fifth annual citywide garage sale will be held June 14-15. Open to all New Hope residents. Sign up now to include your sale on a published map. To register, go to newhopemn.gov/rec and select “Register for Garage Sale” or call 763-531-5151. Register by June 3.

Friday and Saturday, June 14 and 15
There is no charge to participate.

Food Truck Fridays

Join your neighbors for Food Truck Fridays this summer! Various food truck vendors will be parked in the City Hall lot over the lunch hour, providing many options to cure those lunchtime cravings. Choose from tried-and-true favorites or try something new. A list of scheduled vendors will be available at newhopemn.gov/foodtruckfriday.

Fridays, June 7-August 16 (no trucks 7/12)

11 a.m.-2 p.m.

New Hope City Hall parking lot, 4401 Xylon Ave N



Families

Family Activity Packs

Families can check out sports equipment, games and activities to enjoy at home or in any of New Hope's parks! Thanks to funding from Hennepin County, this equipment is available for youth and families to try different activities. All equipment is cleaned between uses, and packs are available for rental for two weeks on designated dates. Craft kits are available for purchase and can be used for kids ages 3 and up with an adult. *Limited quantities are available.*

Backyard Games Pack (130330)

Spikeball, washer toss, horseshoe set, American Ninja Warrior obstacle course

Summer Sports Pack 1 (130310)

Footballs, basketballs, soccer balls, Frisbee, kickball, volleyball

Summer Sports Pack 2 (130311)

Pickleball set, tennis set, Wiffleball set, scoop ball set

\$15 per rental kit, along with a \$50 deposit which will be refunded after equipment is returned

Craft Pack (130301-C)

Chalk, bubbles, paddleball paddles, blank journals, coloring books, DIY wood airplane kit, crayons, magic scratch items.

\$15 per kit to purchase

Group Ticket Sales

Save the extra fees and purchase tickets at a reduced cost through the New Hope Parks & Recreation office. We will notify you when your tickets are in. Transportation is on your own. Refunds after the deadline are given only if the event is cancelled. Refunds before the deadline are subject to a service fee (see page 47). Online ticket sales are available at webtrac.nhrecexpress.com; select Tickets. Tickets are available for the following event:

Minnesota Twins at Target Field

Celebrate Father's Day by watching your favorite baseball team outdoors! Cheer on your Minnesota Twins as they take on the Oakland Athletics. Enjoy the breathtaking views and dazzling amenities of Target Field, the world-class home of Twins Territory. Children over 30" tall need a ticket. *Purchase by May 23.*

Sunday, June 16, 1:10 p.m.

\$27 per ticket (Section 304)

The Backyard at Brookview

Adventure awaits! Go on a safari, to outer space or on a pirate cruise in search of treasure. The only limitation is your imagination! This 3,000-square-foot indoor playground features slides, tubes, cargo climbs, log rollers and more. For more information, call 763-512-2345 or go to brookviewbackyard.com

- Ages 2-13 (tot area for ages 2-5)
- Two party rooms (call for reservations)

316 Brookview Parkway, Golden Valley

\$5 per person at the door residents of New Hope and Golden Valley

\$6 per person nonresidents

Free for adults and children under 2 years old.

Step To It/Paso a Paso Challenge (May 1-28)

Build healthy habits by tracking your activity through the Step To It Challenge, a fun, free program that encourages people of all ages and abilities to become more active. Join the challenge, along with other Hennepin County cities, on behalf of your community, school, workplace or group home. The challenge is not just about walking; convert a variety of activities into steps, including running, cycling, dancing, manual wheelchair use and many others. Those who participate will have a chance to win Minnesota Twins tickets! Registration opens April 1 at steptoit.org (FREE).

Find Your Five Challenge (August 1-28)

Do you have a competitive spirit? Do you want a fun and easy way to kick-start healthier eating? Then the four-week "Find Your 5 Challenge" is for you! Hennepin County Public Health is offering this challenge that focuses on increasing the amount of fruits and vegetables you eat daily. The goal is to consume at least five fruits and veggies daily to decrease your risk of chronic disease. The challenge is a fun, engaging way to improve your health, energy and body image. You can participate independently or challenge your neighbors, co-workers and family to Find Your 5! Registration opens July 1 at hennepin.us/find-your-five (FREE).



Storytime In The Park

Family Storytime in the Park

All ages are welcome to enjoy these Wednesday storytimes hosted by the cities of New Hope, Crystal, Golden Valley and Robbinsdale. Presented by Princess Party Pals.

10:30-11:15 a.m.

Free!



Beauty - June 26

Join Beauty for an enchanting story about true love. Watch as the Beast makes his transformation from someone mean and scary to someone loving and kind. It's a tale as old as time that inspires goodness and forgiveness while teaching kids about kindness and empathy.

New Hope Performance Center
4401 Xylon Ave N

Flexi Girl - July 10

STRETCHHHHHH! Join this flexible super hero for a fun story time about an INCREDIBLE family. What's your special skill? Are you strong? Are you kind? Are you fast? Are you a great helper? This cool Super Mom is sure to get you moving and stretching in all directions. It's going to be INCREDIBLE!

Becker Park
5530 Douglas Drive N, Crystal



The Nanny - August 7

Join Mary for a nostalgic story about being polite and good ol' fashioned manners. Mary will share her story about caring for two young children and all the adventures their imagination takes them on. Music, movement and tongue twisters make this story time supercalifragilisticexpialidocious!

Lakeview Terrace Park
3769 Crystal Lake Blvd, Robbinsdale

Troll Queen - August 21

Join the Troll Princess for a story time and dance party about how she saved the Trolls from the Bergens on Trollstice. Meet all of Poppy's friends and even a few Bergens, sing songs, watch Poppy play her cowbell, learn a dance to "Can't Stop the Feeling," and never forget to show your true colors!

Brookview Park Gazebo
200 Brookview Parkway, Golden Valley



Adults



Yoga

Bring your mat and join PR Brady for an hour of yoga. *Registration deadline is one week prior.*

Crystal Community Center, 4800 Douglas Drive
\$89 May-June sessions
\$99 July-August sessions
(nonresidents of New Hope and Crystal add \$7)

Gentle Yoga

Soothe your mind and body and release tension. Great for anyone new to yoga at any stage of life.

120304-A1 Sundays, May 12-June 30 (no class 5/26)
120304-A2 Sundays, July 14-September 1
7:30-8:30 p.m.

Happy Joints

If you stand or sit all day, are tense, inflexible, or experience anxiety, guided meditation and specific yin asana sequences will help you overcome these issues and feel renewed.

120304-B1 Wednesdays, May 8-June 26 (no class 5/29)
120304-B2 Wednesdays, July 10-August 28
4:30-5:30 p.m.

Beginner Hatha Yoga

Increase strength, balance and flexibility as you learn a series of classic Hatha poses.

120304-F1 Wednesdays, May 8-June 26 (no class 5/29)
120304-F2 Wednesdays, July 10-August 28
3:15-4:15 p.m.

Strength Yoga

Increase your strength and stamina with a practice that intertwines classic Yoga asanas with isometrics. Great for those with minor joint discomfort or those recovering from injury.

120304-D1 Thursdays, May 9-June 27 (no class 5/30)
120304-D2 Thursdays, July 11-August 29
10-11 a.m.

Chair Yoga

If getting down to a yoga mat is challenging, this class might be for you. Breathwork and gentle poses will help you increase flexibility and balance.

120304-E1 Thursdays, May 9-June 27 (no class 5/30)
120304-E2 Thursdays, July 11-August 29
8:45-9:45 a.m.

Energy Flow Yoga

An energizing hour that includes breathwork, meditation, balance, strength and stretching.

120304-H1 Sundays, May 12-June 30 (no class 5/26)
120304-H2 Sundays, July 14-September 1
6:15-7:15 p.m.

Zumba

This cutting edge, high-energy fitness system is a combination of unique body sculpting and dance steps to Latin and international music. Great for the body and mind. *Registration deadline is one week prior to the session.*

120303-A Tuesdays, April 16-May 21
120303-B Tuesdays, June 4-July 9
120303-C Tuesdays, July 16-August 13
6:30-7:30 p.m.

Crystal Community Center, 4800 Douglas Drive
\$35 Per session residents of New Hope and Crystal
\$42 Nonresidents
\$91 All three sessions residents of New Hope and Crystal
\$98 Nonresidents



Interested in Teaching a Class or Program?

Go to newhopemn.gov/rec and click on "Email Us With Your Suggestion."



Pickleball Lessons

Adults and teens ages 16 and older, would you like to try Pickleball? It's a game played on a court similar to a tennis court, where players hit a Wiffle Ball with a paddle that is slightly bigger than a ping-pong paddle. Learn the skills and rules of this fun sport for two to four players and discover why Pickleball is currently the fastest-growing sport in America. Sessions are open to all skill levels. Equipment provided. Programs are run by RevSports staff.

Wednesdays, April 10-May 1

121502-A1 5-5:55 p.m.

121502-A2 7:30-8:25 p.m.

Wednesdays, May 8-29

121502-B1 5-5:55 p.m.

121502-B2 7:30-8:25 p.m.

Wednesdays, June 5-July 10 (no class 6/19, 7/3)

121502-C1 5-5:55 p.m.

121502-C2 7:30-8:25 p.m.

Wednesdays, July 17-August 7

121502-D1 5-5:55 p.m.

121502-D2 7:30-8:25 p.m.

Meadow Lake Elementary courts, 8525 62nd Ave N
\$67 Residents of New Hope, Brooklyn Center,
Crystal and Robbinsdale
\$74 Nonresidents

USTA Tennis Lessons

Have fun, stay in shape and meet new friends while playing the lifetime sport of tennis! Beginner classes are for those with little or no tennis experience. Participants will learn basic strokes and begin to rally. Advanced beginner classes are for those who know the basics. Participants will work on ball tracking, movement, consistency, and match play. Classes are taught by United States Tennis Association (USTA)-trained instructors. All participants in the Beginner class at 6 p.m. will receive a new HEAD tennis racquet. *Registration deadline is one week prior to the session.*

Tuesdays, June 4-July 16 (no class 7/2)

121501-A Beginner, 6-7 p.m.

121503-A Advanced Beginner, 7:15-8:15 p.m.

Tuesdays, July 30-September 3

121501-B Beginner, 6-7 p.m.

121503-B Advanced Beginner, 7:05-8:05 p.m.

Civic Center Park tennis courts
4401 Xylon Ave N, New Hope
\$60 Residents of New Hope, Crystal and Robbinsdale
\$67 Nonresidents

Acrylic Pour - Beach Wave

Learn how to create fun and easy fluid art. Instead of paintbrushes, we will use gravity to move the paint and apply different techniques to create two ocean-inspired pours. You will create two 8"x8" canvases to take home (tray provided). Your final piece will change during transportation and when it is completely dry. *Register by April 25.*

120204-I Monday, May 6
7-8:30 p.m.

Crystal Community Center, 4800 Douglas Drive
\$40 Residents of New Hope, Crystal, Golden Valley
and Robbinsdale
\$47 Nonresidents

Buttercream 101

Learn how to make delicious buttercream toppings for cakes or cupcakes from a professional baker from Sweet Heaven by Nne. Leave class with a tub of your own American-style buttercream to use on your creations. *Register by August 4.*

120309-A Tuesday, August 13
6-7 p.m.

Crystal Community Center
\$25 Residents of New Hope, Crystal, Golden Valley
and Robbinsdale
\$32 Nonresidents

Succulent Garden

Express yourself while you create a one-of-a-kind succulent garden. Design this living work of art with colorful succulents, plus add some whimsical touches. Enjoy your creation at home or give it as a special gift. *Register by April 11.*



120204-H Friday, April 19
6:30-8 p.m.

Crystal Community Center, 4800 Douglas Drive
\$45 Residents of New Hope, Crystal, Golden Valley
and Robbinsdale
\$52 Nonresidents

Women's Self-Defense

Take control of the situation with basic self-defense moves that are easy to remember. Learn escapes, kicks and strikes that really work, and what to do and say when in a compromised situation. The class is taught by Master Tom Malone and is for women ages 13 and up. *Register by July 12.*

120308-A Friday, July 19
9-10:30 a.m.

New Hope Ice Arena, 4949 Louisiana Ave N
\$39 Residents of New Hope, Crystal, Golden Valley
and Robbinsdale
\$46 Nonresidents



Three Rivers Programming Evening Warbler Walk

Many of the migrating warblers are moving into and through the park. Learn techniques to know if it's a warbler or not; maybe even what kind of warbler it is. All equipment provided. Feel free to bring your own binoculars. *Register by May 14.*

121101-B Tuesday, May 21, 6-7:30 p.m.
Sochacki Park, 3500 June Ave N, Robbinsdale
\$6 Residents of New Hope, Crystal, Golden Valley
and Robbinsdale
\$13 Nonresidents

Friday BINGO



Join us monthly for an hour of BINGO hosted by local sponsors. It's free to play, and prizes will be awarded. Following BINGO, stick around for Food Truck Fridays, taking place in the City

Hall parking lot from 11 a.m. to 2 p.m. (purchase food on your own).

Friday, June 14, 10-11 a.m.
Friday, July 19, 10-11 a.m.
Friday, August 9, 10-11 a.m.

Civic Center Park picnic shelter, 4401 Xylon Ave N
Free!

Defensive Driving Courses

Adults 55 years and older who complete an accident prevention course every three years are eligible for a 10 percent automobile insurance premium reduction. These courses are co-sponsored by the Minnesota Safety Council and the New Hope Police Department. You must attend the entire class to receive a certificate. No driving or testing required. Please include your drivers' license number when registering. *Advanced registration is required.*

Four-Hour Refresher Course

Must have taken the eight-hour Defensive Driving course.

120306-A Wednesday, May 15, 5:30-9:30 p.m.
120306-B Tuesday, June 18, 8 a.m.-12 p.m.
120306-C Wednesday, August 7, 12:30-4:30 p.m.
New Hope City Hall, 4401 Xylon Ave N
\$26 New Hope residents
\$33 Nonresidents

Pub 42 Classic Softball Tournament

Register your team, or just come and take in some great softball at one of the largest tournaments in the state! Men's, women's and co-rec teams will compete for cash prizes in this three-day tournament held the weekend of July 19-21. A bean bag tournament will also be held on Saturday, July 20. For more information or to register a team, contact Cathy at 763-228-1974 or hoffe12@msn.com.

Foot Golf League

Step into the world of fun and precision with this foot golf league! Uniting soccer enthusiasts and golf aficionados, the league offers a unique blend of skill and strategy. Join us for a thrilling season of kicks and putts on the lush greens, where every step counts toward victory. Players should select a 30-minute window for their tee time based on the time slots below. The first day of leagues will be a meet and greet. *Deadline to register is two weeks prior to the session.*

Sundays, May 5-July 7 (no league 5/26)

121700-A1 2-2:30 p.m.
121700-A2 2:30-3 p.m.
121700-A3 3-3:30 p.m.
121700-A4 3:30-4 p.m.

Sundays, July 14-September 15 (no league 9/1)

121700-B1 2-2:30 p.m.
121700-B2 2:30-3 p.m.
121700-B3 3-3:30 p.m.
121700-B4 3:30-4 p.m.

Brookland Golf Course
8232 Regent Ave N, Brooklyn Center
\$95 per person per session





Golf Leagues

New Hope Village Golf Course offers a variety of adult, senior and youth leagues. Joining a golf league is a great way to enjoy the game of golf regularly. Our leagues are open to players of all abilities (emphasis on fun!) All leagues are organized play using the handicap system with special weekly events and seasonal awards. The main focus of our leagues is recreation and enjoyment!

Golf leagues begin the week of April 29 and run through the week of September 23, but you may join the league after it has already started.

- Seniors League on Monday mornings
- Men's League on Monday evenings
- Women's Leagues on Tuesday, Wednesday or Thursday mornings
- Women's Leagues on Tuesday, Wednesday or Thursday evenings
- Couples League on Friday evenings

To register or for more information, call the golf course at 763-531-5178.

\$45 per person entry fee, plus weekly greens fees

A Beginner's Guide to Golf

All ages are welcome to attend a free seminar to gain a better understanding of the game of golf. We'll cover rules and terminology, equipment, proper grip and stance and hitting the ball. No equipment needed. No registration required.

Sunday, May 19

12-12:30 p.m.

12:30-1 p.m.

1-1:30 p.m.

Free!

Group Golf Lessons

Maximize your enjoyment of the game of golf with a full range of game improvement lessons that are offered by an experienced golf coach. In a small group setting, the skill fundamentals of golf will be taught, including proper grip, stance and swing with all clubs. These lessons are great for the beginner golfer and those who want to brush up on the basics. Clubs are available, or you may bring your own.

Thursdays, May 23-June 6

121800-A Beginner, 6-7 p.m.

121800-B Beginner, 7-8 p.m.

Tuesday, May 28 and Mondays, June 3 and 10

121800-C Beginner, 6-7 p.m.

121800-D Beginner, 7-8 p.m.

Mondays, June 17 and 24 and Thursday, June 27

121800-E Beginner, 6-7 p.m.

121801-A Advanced, 7-8 p.m.

Mondays, July 15-29

121800-F Beginner, 6-7 p.m.

121801-B Advanced, 7-8 p.m.

Mondays, August 5-19

121800-G Beginner, 6-7 p.m.

121801-C Advanced, 7-8 p.m.

New Hope Golf Course, 8130 Bass Lake Road

\$90 per session



COMMUNITY TRIPSTERS

This trip series is sponsored by the cities of New Hope, Crystal, Brooklyn Center and Plymouth. Trip fees are all-inclusive for the day, including transportation, escort, lunch, tax and gratuity unless otherwise indicated. Refunds after the deadline are given only if the trip is canceled. Refunds before the deadline are subject to a service fee (see page 47). Join our mailing list to receive information on upcoming trips. Call 763-531-5151.

Minneapolis Library & Fire Museum

Take a docent-guided tour of the Minneapolis Central Library that will incorporate aspects of architecture, philosophy, science, art, history and, of course, books and literature. Then, tour the Minnesota Fire Museum to view a collection that includes nine apparatus, nearly 5,000 patches, more than 10,000 photos and countless other fire-related items from helmets to fire extinguishers to gear to various tools. Following the tours, enjoy lunch at The Local with a choice of fish and chips, a Reuben sandwich or shepherd's pie. *Register by April 15.*

120501-S Tuesday, May 14

Depart 9:45 a.m. from Crystal Community Center, 4800 Douglas Drive; Return about 3:45 p.m.
\$89

Lake City Boat Cruise

Enjoy breathtaking views of Lake Pepin while dining at Kelly's Lake House. Lunch will be a petite sirloin meal. Following lunch, we will board the Winona Tour Boat with a climate-controlled cabin where the captain will share excellent insight and stories about the beautiful Mississippi River. *Register by May 13.*

120501-T Tuesday, June 11

Depart 8:45 a.m. from Crystal Community Center, 4800 Douglas Drive; Return about 6:15 p.m.
\$93

Two Harbors & Split Rock Lighthouse

Take a guided tour of the Split Rock Light Station, one of Minnesota's best-known landmarks. Restored to its 1920s appearance, the lighthouse offers a glimpse of lighthouse life in this remote and spectacular setting. After the tour, visit the site at your own pace and spend time in the gift shop. A buffet lunch at the Grand Superior Lodge includes a chicken Caesar wrap, a club sandwich and several sides. There will be a stop at Burlington Station and Callie's Sweets to enjoy the breathtaking murals and watch as G-scale model trains travel overhead! There will also be a Stop at Tobies in Hinckley for treats to be purchased on your own. *Register by June 20.*

120501-U Tuesday, July 23

Depart 7 a.m. from Crystal Community Center, 4800 Douglas Drive; Return about 7:45 p.m.
\$106

Hudson Boat Cruise

Cruise the St. Croix River and enjoy the scenic shores of Minnesota and Wisconsin with views of the rugged landscapes, majestic views, woodlands and wildlife. Our on-board luncheon menu will include chicken marsala and mostaccioli pasta meal. A cash bar will be available. Following the cruise, browse the unique and eclectic shops in historic downtown Hudson. *Register by July 15.*

120501-V Thursday, August 15

Depart 10 a.m. from Crystal Community Center, 4800 Douglas Drive; Return about 4 p.m.
\$94

Leinenkugel Brewery Tour

Enjoy a broasted chicken lunch buffet at the Fill In Station, then take a guided tour of the Leinenkugel Brewing Company and discover how they use an old-world Germanic brewing method dating back to 1867. Guests need to be prepared to walk for one mile. The path is handicap accessible. Safety glasses are provided and must be worn during the tour. Following the tour, visit the gift shop to purchase merchandise, view historic memorabilia and sample handcrafted beers. On the way home, we'll stop at the Menomonie Creamery to purchase cheese, snacks and other refreshments. *Register by August 19.*

120501-W Thursday, September 19

Depart 8:15 a.m. from Crystal Community Center, 4800 Douglas Drive; Return about 5:30 p.m.
\$97



Extended Trips

Are you interested in taking an extended trip with us but have a few questions? A special free presentation will be held on Tuesday, July 9, at 11 a.m. at the Crystal Community Center. We'll discuss trip itineraries and destination details and get those questions answered.



Elvis Presley & Memphis: October 6-12

Memphis, music and Elvis! Visit Graceland and see the recently completed 200,000-square-foot expansion project. Tour Sun Studios, the Rock & Soul Smithsonian and more. Enjoy time at your leisure on Beale Street and sample some of the country's best BBQ! Trip includes deluxe motorcoach transportation, lodging, guided tours and more. *Register by August 18.*

220500-B1 \$1898 per person
(double occupancy)

220500-B2 \$1997 per person
(single occupancy)

Myrtle Beach Christmas: December 3-7

Enjoy a Christmastime trip to Myrtle Beach to see the Christmas shows while staying oceanfront in a lovely resort on the beach! Enjoy fantastic southern entertainment and food while visiting one of the most beautiful Christmas light displays in the United States and enjoy an amazing helicopter ride over the beach. Trip includes flights, ground transportation, lodging, guided tours and more. Transportation to and from MSP airport not included. *Register by October 18.*

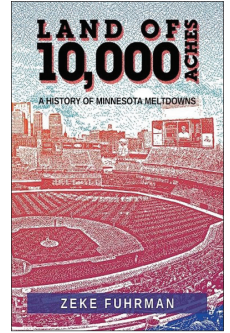
220500-C1 \$1898 per person
(double occupancy)

220500-C2 \$2098 per person
(single occupancy)

Author Series

"Land of 10,000 Aches" by Zeke Fuhrman

Radio host Zeke Fuhrman details some of the most heart-breaking and gut-wrenching moments of the long-tortured Minnesota sports fanbase in his book "Land of 10,000 Aches". Chronicling woeful moments from 1948 to 2019, this book serves as a history lesson for the younger generation as well as a bond for fans who have witnessed and lived through these moments. *Register by April 9.*



120503-AP Thursday, April 11
6-7 p.m.

Crystal Community Center, 4800 Douglas
\$3 per person (please pre-register)

Donut Make You Wonder



Join us on the third Wednesday of the month for informative programs and, of course, donuts. Co-sponsored by the cities of New Hope, Crystal, Robbinsdale and Brooklyn Center.

Call 763-531-5151 for program information or to register, or go to webtrac.nhrecexpress.com

10-11:30 a.m.

Crystal Community Center, 4800 Douglas Drive
\$3 per person for program, coffee and donut

Antisemitism: Then and Now - April 17

One of the most pernicious and persistent antisemitic tropes holds that Jews have inordinate power in the world or that Jews control the world. This, even though Jews are only about 0.2% of the global population. In this presentation, you will learn about the origins and history of antisemitism, its primary tropes and why combating antisemitism is central to the work of creating a safer and more just, equitable and inclusive society. *Register by April 15.*

120502-AP

HAM Radio - May 15

Have you ever heard of HAM Radio? Ever wondered if HAM radio is a useful hobby? Listen to a Minnesota HAM Radio – Maple Grove club representative to hear how you can get your license and talk to people across town and the world, all without the internet or cell phones. *Register by May 13.*

120502-MY

Outdoors



New Hope Performance Center

New Hope's Performance Center is located at 4401 Xylon Avenue North (just west of the New Hope Aquatic Park). The performance center will host concerts, music in the park, city programs and special events, and is home to the Off-Broadway Musical Theatre.



New Hope Skate Park

This tier one skate park is suitable for skateboarders of all skill levels, including beginners. The park features an assortment of modular stainless steel ramps, grind rails, ledges and boxes on a 7,800 square foot concrete pad just west of the New Hope Aquatic Park. The skate park is free and open during park hours.



Disc Golf Course

New Hope has a disc golf course located at Sunnyside Park, 4751 Quebec Ave N. The course is free to the public and open during posted park hours. Any league play must be sanctioned by the Parks and Recreation Department. If you are interested in league play please contact us as 763-531-5155.



Pickleball Courts

Pickleball courts are conveniently located throughout the city. Courts are first-come, first-served unless otherwise reserved. To reserve a court, call 763-531-5155 (fees apply).

Permanent Pickleball Courts (8)

- Meadow Lake Elementary, 8525 62nd Ave N

Combination Tennis/Pickleball Courts (2 each)

- Civic Center Park, 4401 Xylon Ave N
- Hidden Valley Park, 8800 32nd Ave N

These courts have a clip that can be adjusted to either tennis or pickleball height according to the following instructions:

Tennis: Connect center net clip to S-Hook

Pickleball: Connect center net clip to Court Surface Mount

Drop-in Pickleball

Drop-in play will be offered at two locations this summer. Grab a paddle and a friend--or come by yourself and meet up with other players. Either way, you'll have a great time playing this exciting game!

Mondays, Wednesdays and Fridays, 8-10 a.m.

Mondays, 7-9 p.m.

- Meadow Lake Elementary, 8525 62nd Ave N
- Hidden Valley Park, 8800 32nd Ave N



Off-Leash Dog Parks

Want to give your canine buddy a chance to socialize with other dogs and run in a large, safe, enclosed area? New Hope has seasonal dog parks in two city parks for just that purpose.

Off-leash dog areas are located in the hockey enclosures at the following parks:

- Lions Park, 3810 Oregon Ave N
- Liberty Park, 9015 60th Ave N

The dog parks are free and may be used during daylight hours only. Pet owners are responsible for controlling and picking up after their dogs. Dogs must remain on-leash until they enter the dog park enclosure. Full set of rules is posted at the dog park entrance. Open from April to October (weather dependent). Call 763-531-5151 for more details.

Lighted Baseball Field Improvements

Various improvements took place in 2023 at Lighted Baseball Field, located at 8810 49th Ave.

Improvements included re-grading and re-sodding the infield and part of the outfield, adding a new batting cage, rebuilding the pitcher's mound, retrofitting to LED lighting, new fencing, trail upgrades and replacement of the shelter building with a new shade structure.

Thank you to the Minnesota Twins Community Fund for a \$10,000 grant toward the improvements and an additional \$8,000 toward equipment!



Thank you, Adopt-a-Park Volunteers

The City of New Hope would like to thank the individuals and groups listed below for participating in the New Hope Adopt-a-Park Program.

Adopt-a-Park volunteers have assisted the City in keeping New Hope's parks clean and beautiful since 1994. Adopt-a-Park activities include litter pick-up, flower planting and tree planting. This public service program is open to community groups, civic organizations, churches and individuals.

If your group wants to adopt a park, please call Shawn Markham, city forester/contract manager, at 763-592-6763.

- Begin Park** Cub Scout Pack 126, Den 3
- Civic Center Park** New Hope Women of Today
- Corner Park** Kath Hammerseng, Sohūs Real Estate Group
- Dorothy Mary Park** City of New Hope Employees
- Elm Grove Park** Cub Scout Pack 163
- Erickson Drive** Debbie, Lindsey and Jessica
- Fred Sims Park** Cub Scout Pack 527
- Hidden Valley Park** New Hope Church
- Holiday Park** The Flagsters
- Jaycee Park** Hometown Church New Hope
- Liberty Park** New Hope Citizen Advisory Commission
- Lighted Athletic Complex** Crough Family and Neighbors
- Lions Park** Holy Nativity Lutheran Church
- Little Acre Park** Girl Scout Troop 330
- Meadow Lake Park** Meadow Lake Student Council
- Northwood Park** Boy Scout Troop 534
- Sunnyside Park** New Hope Human Rights Commission
- Terra Linda Park** Available
- Victory Park** Employees of Safco Products Co.

Playground Safety

We hope you can safely enjoy the New Hope playgrounds! If you notice a piece of equipment needing repair or vandalism that has taken place, please call 763-531-5151.

New Hope's playground provider has offered some basic safety information that is beneficial for anyone using playground equipment:

- Adult supervision is always recommended
- Drawstrings can become entangled on slides and other playground equipment, causing strangulation. Remove helmets, drawstrings, scarves and other accessories around the neck before playing on a playground.
- Surfacing and play surfaces may become HOT and cause burns. Check for hot surfaces before playing on the playground.
- Wet surfaces may be slippery. Use with caution to avoid falls.
- Play surfaces are not sanitized.

Golf Course

New Hope Village Golf Course

8130 Bass Lake Road 763-531-5178

New Hope Village Golf Course is a beautiful nine-hole course with a par of 27. Twenty-three acres of gently rolling terrain greet you, with large mature trees, water hazards and sand traps throughout the course. These features make the New Hope Village Golf Course an excellent place for people of all ages and skill levels to enjoy the game of golf. The air-conditioned clubhouse offers a wide variety of snacks and beverages and is a great place to relax after a round of golf.

Open Golf

The golf course has plenty of opportunities for open golf. A round of golf only takes about 90 minutes. Golf carts, pull carts and clubs are available for rental. Reservations are strongly recommended and can be made by calling 763-531-5178 or online at newhopegolf.org.

2024 Greens Fees

Adults	\$17
Seniors	\$15
Juniors	\$10

Punch cards are also available with reduced greens fees.

Season Golf Pass:

Adult/Senior New Hope Resident	\$330
Adult	\$410
Senior	\$375
Junior	\$175
Family	\$575

For information about...

Adult golf leagues and lessons - page 36

Youth golf leagues and lessons - pages 6 and 20

Group Outings/Picnic Pavilion

New Hope Village Golf Course is a perfect location for your next company, family or group outing. Since the golf course is designed for all skill levels, everyone can participate without feeling intimidated. The course's covered picnic pavilion has gas grills available for use, with restrooms conveniently located nearby.

Call 763-531-5178 to book your outing today.

Clubhouse Rental

The clubhouse is available for family gatherings, business meetings, baby and bridal showers, birthday and anniversary parties, and more. Rentals are available from November through the end of March. Call 763-531-5178 for more information.

Re-Grip Your Clubs!

Have your old clubs lost their grip? Get them re-gripped at the New Hope Golf Course!

Call 763-531-5178 for details.



Aquatic Park

New Hope Aquatic Park, 4411 Xylon Avenue North, 763-531-5180

Plan your visit to the New Hope Aquatic Park and see why it was once again voted "Best Indoor/Outdoor Waterpark" by Sun Post Newspaper readers! The facility features a fifty-meter, eight-lane outdoor pool with one- and three-meter diving boards, a drop slide, and a wibit (floatable water play). The shallow water recreation area includes a zero-depth entry, fast and slow body slides, a current channel, a vortex pool, a tot slide and play features. Enjoy additional amenities including a sun turf area, comfortable chaise lounge seating, a bathhouse and a concessions area featuring a wide range of menu options.

June 1-2, June 6-August 18

Monday-Friday, 12-8 p.m.

Saturday & Sunday, 11 a.m.-7 p.m.

(Aquatic Park closed July 12-14 for swim meet)

Daily Admission:

\$13 ages 2-54

\$12 ages 55+, military

\$12 after 5 p.m. (all ages)

Coupon Book (Good for 2024 Season):

\$110 for 10 admission coupons

Season Pass (Good for 2024 Season):

Resident rate applies to New Hope, Crystal and Golden Valley residents (ages 2 and over).

Early Bird Rate (by May 31 at 4:30 p.m.)

Resident: \$70 per person

Nonresident: \$90 per person

Regular Rate (after May 31 at 4:30 p.m.)

Resident: \$80 per person

Nonresident: \$100 per person

Cabana Rental

Reserve a cabana for your child's birthday party, family gathering or work outing. Cabana dimensions are 13'x25' and include one picnic table and four lounge chairs. Reservation includes exclusive use of cabana and the option to purchase box lunches for only \$8. Box lunches consist of hamburgers or hot dogs, chips, and pop. No outside food or drink is allowed. No decorations. Pool admission is extra. Maximum of 20 people. Refunds or transfers are allowed up to three days before the rental. Patron-requested refunds are subject to a \$5 service fee. No refunds or transfers less than three days before the rental unless the spot can be filled. Call 763-531-5151 to make your reservation, or book online at webtrac.nhrecexpress.com and select "Facility Reservations."

\$49 12:30-3:30 p.m.

\$49 4-7 p.m.

Add-on: \$8 box lunches (payable at gate)

Group Reservations

Bring your field trip to the New Hope Aquatic Park and get access to special rates! Reservations must be made at least seven days in advance. The rate includes one free chaperone for every 10 children. Minimum 25. Call 763-531-5151 to book your reservation.

\$11 per person

Additional Information:

- Children under age 2 are free.
- Children 10 and under must be accompanied by a guardian age 15 or older.
- No food or coolers allowed. Plastic water bottles permitted.
- You must pass a swim test in order to swim in the deep end.
- You must be 48" tall to use the green and blue slides.
- You must be 48" tall and pass a swim test to use the drop slide in the 50-meter pool.
- Only swimwear may be worn in the pool. No T-shirts, shorts or shoes allowed.
- Tight-fitting plastic pants or swim diapers must be worn if a child is still in diapers.
- No flotation suits or toys will be allowed.
- Personal flotation devices (PFDs) may be worn in the pool. Must be Coast Guard-approved.
- Certain conditions may cause an early closure, including severe weather, air quality, low temperatures, etc.
- No refunds on season passes after May 31.
- Season pass is non-transferable. Misuse will result in forfeiture of the season pass.

Tot Time

Attention parents! Bring your little ones to Tot Time at the New Hope Aquatic Park. This special event allows children aged 0 to 5 to enjoy splashing and playing in the shallow water recreation pool before the park opens to the general public. Take advantage of this fun opportunity for your little ones!

Saturdays, June 22 & 29; July 6, 20 & 27; August 3 & 10

9:45 to 10:45 a.m.

\$5 per tot (one parent/guardian can accompany their child for free)

No charge for tots with their own season pass

Swim Club

The New Hope Crystal Plymouth Swim Club provides an opportunity for youth, ages 6-18, to acquire the skills for competitive swimming through professional coaching, teamwork and self-discipline. United States Swimming sanctions the club and promotes good sportsmanship, fitness, fun and friendship. Competitive swim meets are held throughout Minnesota, with most in the Twin Cities area. This year-round program includes fall, winter, spring and summer sessions. Splash Opportunities (tryouts) and individual assessments for team readiness and placement are held throughout the year.

Website: gomotionapp.com/team/mnnhcp/page/home

NEW

Adult Water Aerobics

Have fun and stay fit as you tone your muscles, improve your flexibility and get a great cardio workout. This class is the perfect way to get a rigorous workout that's gentle on the joints.

Sundays, June 16-August 11 (no class 7/14)

7:45-8:30 p.m.

\$10 per person at the door

Lap Swimming for Adults

Monday-Friday, June 10-August 9

9-11:45 a.m.

Monday-Thursday, June 10-August 8

6-8 p.m.

\$50 for a 10-punch pass or \$6 for a daily pass

No charge for season pass holders

Water Walking for Adults

Walk against the current channel for a fun, low impact cardio workout. Water shoes are permitted.

Monday-Friday, June 10-August 9

9-11:45 a.m.

\$50 for a 10-punch pass or \$6 for a daily pass

No charge for season pass holders



Lifeguard Certification Course

The American Red Cross lifeguard training and certification are imperative to getting hired as an official Red Cross lifeguard. Our detailed training includes testing of hands-on skills and comprehension on written tests. The certification, which includes First Aid, CPR and AED training, is valid for two years upon completion and is accepted nationwide.

Students must be at least 15 years old by the last day of class, and all students must pass a pre-course swimming skills test on the first day.

140107-A1 Friday-Sunday, May 24-26

May 24 5-8 p.m.

May 25-26 9 a.m.-6 p.m.

140107-A2 Monday-Friday, June 17-21

8 a.m.-12 p.m.

140107-A3 Monday-Friday, August 5-9

8 a.m.-12 p.m.

\$200 per person (free if under 21)

Thanks to a generous grant from Hennepin County the Lifeguard Certification course is free to anyone under age 21.

SWIMMING LESSONS

Red Cross certified swimming lessons are offered for youth ages 3-15. Parents/guardians are encouraged to be present the first day of class. Lessons are held rain or shine.

\$70 Residents of New Hope, Crystal and Golden Valley

\$77 Nonresidents

Session 1: Monday-Thursday, June 17-27

Levels 1, 2

140101-A1	9-9:45 a.m.
140101-A2	10-10:45 a.m.
140101-A3	11-11:45 a.m.

Level 3

140103-A1	9-9:45 a.m.
140103-A2	10-10:45 a.m.
140103-A3	11-11:45 a.m.

Level 4

140104-A1	9-9:45 a.m.
140104-A2	10-10:45 a.m.

Level 5

140105-A1	11-11:45 a.m.
-----------	---------------

Session 2: Monday-Thursday, July 1-11

Little Ones (Parent/Child)

140100-B1	11-11:30 a.m.
-----------	---------------

Levels 1, 2

140101-B1	9-9:45 a.m.
140101-B2	10-10:45 a.m.
140101-B3	11-11:45 a.m.

Level 3

140103-B1	9-9:45 a.m.
140103-B3	11-11:45 a.m.

Level 4

140104-B1	9-9:45 a.m.
140104-B2	10-10:45 a.m.

Level 5

140105-B1	11-11:45 a.m.
-----------	---------------

Session 3: Monday-Thursday, July 15-25

Little Ones (Parent/Child)

140100-C1	11-11:30 a.m.
-----------	---------------

Levels 1, 2

140101-C1	9-9:45 a.m.
140101-C2	10-10:45 a.m.
140101-C3	11-11:45 a.m.

Level 3

140103-C1	9-9:45 a.m.
140103-C2	10-10:45 a.m.
140103-C3	11-11:45 a.m.

Level 4

140104-C1	9-9:45 a.m.
140104-C2	10-10:45 a.m.

Level 5

140105-C1	11-11:45 a.m.
-----------	---------------

Session 4: Monday-Thursday, July 29-August 8

Levels 1, 2

140101-D1	9-9:45 a.m.
140101-D2	10-10:45 a.m.
140101-D3	11-11:45 a.m.

Level 3

140103-D1	9-9:45 a.m.
140103-D2	10-10:45 a.m.
140103-D3	11-11:45 a.m.

Level 4

140104-D1	9-9:45 a.m.
140104-D3	11-11:45 a.m.

Level 5

140105-D1	10-10:45 a.m.
-----------	---------------

Level 6-Personal Water Safety

140106-D2	11-11:45 a.m.
-----------	---------------





Swimming Lesson Skill Level Descriptions

Little Ones (Parent/Child)

This class is specially designed for children ages 3 to 4. Children must be potty trained. Students will learn basic water skills such as blowing bubbles, submerging their faces, paddling and floating, and become familiar with safe water practices. Parents should wear swim attire and are expected to be in the water with their child.

Level 1 - Introduction to Water Skills

Must be 5 years or older by the first day of class. Four-year-olds who have passed Little Ones may register for Level 1 with Instructor approval. Students will learn basic aquatic skills including entering the water independently using ladder, steps or side, gliding on front and rolling to a back float. Students will learn to be independent in the water by learning front and back float, glides, and combined arm and leg action.

Level 2 - Fundamental Aquatic Skills

Passed level 1 or equivalent. Students learn to float without support and recover to a vertical position. Students learn fundamentals of treading water, front and back glides and floats, and changing direction of travel while swimming on front or back.

Level 3 - Stroke Development

Passed level 2 or equivalent. The objective is to coordinate the front and back crawl and elementary backstroke. Students are introduced to the flutter, scissor, dolphin and breaststroke kicks, the fundamentals of treading water and diving from the side of the pool.

Level 4 - Stroke Improvement

Passed level 3 or equivalent. Students will continue to build on the front and back crawl, elementary backstroke, breaststroke, sidestroke, butterfly, and flutter and dolphin kicks on back. Swimming underwater and survival swimming will also be taught.

Level 5- Stroke Refinement

Passed level 4 or equivalent. Students will refine their skills in front crawl, back crawl, butterfly, breaststroke, sidestroke and elementary backstroke. Flip turns on the front and back, and tuck and pike surface dives are introduced.

Level 6 - Personal Water Safety

Students will be introduced to water safety concepts including survival swimming, treading water and situational safety topics. Students will also refine stroke mechanics and simple dives.

2024 New Hope Aquatic Park Pass Application	
Last Name:	
Home Address:	
City:	
Email:	
Phone:	Date:
Name	Birthdate
#1.	
#2.	
#3.	
#4.	
#5.	

Facilities

Outdoor Facilities Rental

If you're looking for a great spot to throw a birthday party, host a family get-together or organize a fun work event, look no further than New Hope Parks and Recreation Department. Our top-notch outdoor facilities can be rented for your picnic or athletic needs. Whether you're into baseball, softball, soccer or football, we've got the perfect space for your event!

Picnic Pavilions

Civic Center Park, 4401 Xylon Ave N (capacity 50)
Northwood Park, 3815 Boone Ave N (capacity 100)
Hidden Valley Park, 8800 32nd Ave N (capacity 35)
10 a.m.-3 p.m. or 4-9 p.m.
\$95 per time slot New Hope residents/businesses
10 a.m.-9 p.m. (full day rate)
\$170 New Hope residents/businesses
\$200 damage/compliance fee deposit required on all rentals

Warming Houses

Northwood Park, 3815 Boone Ave N (capacity 20)
Hidden Valley Park, 8800 32nd Ave N (capacity 20)
Available from 10 a.m.-9 p.m. (*City-sponsored activities may preempt availability*)
\$28 per hour New Hope residents/businesses
\$20 per hour with pavilion rental (same date/time)

Tennis Courts

Begin Park, 5407 Wisconsin Ave N
Civic Center Park, 4401 Xylon Ave N
Hidden Valley Park, 8800 32nd Ave N
\$26 per player for league usage rentals
\$31 per hour for special one-time event rentals

Indoor Facilities Rental

Community Gyms

The New Hope Community Gyms are located at 8230 47th Ave N, on the north side of Cooper High School. The facility boasts two full-size basketball courts, as well as a batting cage, concessions area, storage rooms, and restrooms. During non-school hours the facility is used for New Hope Parks and Recreation programs. It is also available for rent to the general public. Whether you're looking to hold basketball team practice, a weekend tournament or even a birthday party, we have the perfect place for you. For more information on pricing and availability, please contact Steve Ellingson at 763-531-5155. *These prices will be in effect until September 1, 2024.*

Hourly Rental

\$65 per hour per gym for resident groups
\$71 per hour per gym for nonresident groups
\$45 per hour per gym District 281 Athletic Associations

Daily Rental (both gyms)

\$335 per gym for resident groups
\$395 per gym for nonresident groups
\$270 per gym District 281 Athletic Associations

Ballfields

Baseball/Softball

Lighted Softball, 8810 49th Ave N
Lighted Baseball, 8810 49th Ave N
Victory Park, 5550 International Pkwy
Northwood Park (2), 3815 Boone Ave N

Soccer

Victory Park, 5550 International Pkwy
Hidden Valley Park, 8800 32nd Ave N
Northwood Park, 3815 Boone Ave N



Batting Cage

\$20 per hour (user must provide own balls and pitching machine)

Concession Stand

\$220 rental fee plus \$100 damage deposit

A resident group is a group in which at least 60 percent of the users consist of New Hope residents. A nonresident group, which includes fewer than 60 percent New Hope residents, pays a higher fee.

Registration

In Person

New Hope City Hall

4401 Xylon Ave N

Monday-Friday, 8 a.m.-4:30 p.m.

By Phone

763-531-5151

Register by phone with a major credit card.

Online

webtrac.nhrecexpress.com

24-hours a day, seven days a week.

By Mail

Mail registration and payment to:

New Hope Parks and Recreation

4401 Xylon Avenue North, New Hope, MN 55428

Please Remember

- Registration must be accompanied by fee payment.
- Make checks payable to: City of New Hope
- Payment by check authorizes the City to use information from your check to make a one-time electronic fund transfer from your account.
- **Weather Cancellations:** Call the Weather Cancellation Line at 763-531-5158 for information regarding weather cancellations.

- **Refunds:** Refunds, program credits and transfers are allowed up to one week prior to the start of the program or by the printed deadline. In the event of illness or injury, refunds may be given when accompanied by a doctor's written verification. Refund amount is dependent upon program and supplies involved. No refunds for trips or tickets after the deadline. Service fees are charged on all refunds according to the following schedule:

\$11-49:	\$5 service fee
\$50-99:	\$10 service fee
\$100-149:	\$15 service fee
\$150+:	\$20 service fee

- Sorry, exceptions for ages cannot be made. Participant must be of the appropriate age/grade by the start of the class (unless otherwise specified).
- Confirmations are not sent. If you do not hear from us, the participant should attend on the first date listed.
- A \$30 fee will be charged to cover administrative costs for checks returned to the City.
- **Funds Available:** Funds are available for New Hope families who need assistance with registration fees in order for their child or teen to participate in recreation programs of an instructional nature. Applications must be completed in person. Proof of residency is required with a valid picture ID. Families who qualify will be asked to pay half of the program fee. Not eligible on private lessons, admission fees, competition teams, costumes, golf league or rounds, trips or special events. For more information call 763-531-5151.

New Hope Parks and Recreation Department 4401 Xylon Avenue North, New Hope, MN 55428 Program Registration			
Name:			
Address:			
Birthdate:	Age:	Grade:	Sex: M <input type="checkbox"/> F <input type="checkbox"/>
Email:			
Phone: (H)		(C)	
Activity:		Fee Enclosed:	
Course Number:		Location:	
Date(s):		Time:	
Any Special Needs?			
Parent's Name (if under age 18):			
I, the undersigned parent, guardian or adult participant, authorize the city of New Hope to disclose to the city's insurer, attorney, staff, coaches, and other personnel involved in this program, the participant's name, address and telephone number for the purpose of program administration. I understand that the records are protected under state and federal privacy regulations and cannot be disclosed without my written consent unless otherwise provided by law. I hereby agree to allow the individual named herein to participate in the aforementioned activity, and further agree to hold the city harmless for any claim resulting from participation in this activity. I further give consent for any photos or videos taken during the program to be used by the city in promotional materials.			
Parent/Participant Signature:			
Credit Card:		Exp Date:	ZIP Code:



City of New Hope
A great place to grow!

4401 Xylon Avenue North
New Hope, MN 55428

Prsrt Std
U.S. Postage

PAID

Twin Cities, MN
Permit No. 2330



**WE'RE
HIRING**

Apply Today! Summer Seasonal Employment Opportunities

Not only is New Hope a great place to live and play, but it's also a great place to work! The City of New Hope is hiring for several full and part-time summer seasonal employment opportunities. Positions include guest services, lifeguards, swim instructors, and aquatic park maintenance at the New Hope Aquatic Park; umpires and playground leaders; and seasonal public works positions.

newhopemn.gov/jobs